



Demographic and Income Comparison Profile

17600-17698 US-59 S
 17600-17698 US-59 S, Sugar Land, Texas, 77479
 Rings: 1, 3, 5 mile radii

Prepared by Esri
 Latitude: 29.58142
 Longitude: -95.64983

	1 mile	3 miles	5 miles
Census 2010 Summary			
Population	5,148	68,372	153,314
Households	1,533	22,109	50,216
Families	1,416	18,499	41,427
Average Household Size	3.36	3.07	2.98
Owner Occupied Housing Units	1,450	17,967	40,455
Renter Occupied Housing Units	83	4,142	9,761
Median Age	36.8	38.9	38.2
2019 Summary			
Population	6,791	79,809	184,348
Households	2,025	25,991	61,071
Families	1,864	21,682	50,325
Average Household Size	3.35	3.05	2.96
Owner Occupied Housing Units	1,818	20,616	48,605
Renter Occupied Housing Units	207	5,375	12,465
Median Age	38.2	40.0	39.3
Median Household Income	\$161,160	\$120,048	\$107,515
Average Household Income	\$193,174	\$157,335	\$139,647
2024 Summary			
Population	8,075	89,457	206,616
Households	2,408	29,149	68,614
Families	2,215	24,331	56,526
Average Household Size	3.35	3.05	2.96
Owner Occupied Housing Units	2,158	23,233	55,026
Renter Occupied Housing Units	250	5,917	13,589
Median Age	37.5	40.1	39.6
Median Household Income	\$165,743	\$124,355	\$112,812
Average Household Income	\$203,976	\$165,918	\$149,732
Trends: 2019-2024 Annual Rate			
Population	3.52%	2.31%	2.31%
Households	3.53%	2.32%	2.36%
Families	3.51%	2.33%	2.35%
Owner Households	3.49%	2.42%	2.51%
Median Household Income	0.56%	0.71%	0.97%

Source: U.S. Census Bureau, Census 2010 Summary File 1. Esri forecasts for 2019 and 2024.



Demographic and Income Comparison Profile

17600-17698 US-59 S
 17600-17698 US-59 S, Sugar Land, Texas, 77479
 Rings: 1, 3, 5 mile radii

Prepared by Esri
 Latitude: 29.58142
 Longitude: -95.64983

2019 Households by Income	1 mile		3 miles		5 miles	
	Number	Percent	Number	Percent	Number	Percent
<\$15,000	65	3.2%	1,008	3.9%	2,643	4.3%
\$15,000 - \$24,999	35	1.7%	747	2.9%	2,195	3.6%
\$25,000 - \$34,999	31	1.5%	730	2.8%	2,222	3.6%
\$35,000 - \$49,999	109	5.4%	2,035	7.8%	5,196	8.5%
\$50,000 - \$74,999	112	5.5%	3,006	11.6%	8,568	14.0%
\$75,000 - \$99,999	142	7.0%	2,581	9.9%	6,595	10.8%
\$100,000 - \$149,999	428	21.1%	5,710	22.0%	14,116	23.1%
\$150,000 - \$199,999	322	15.9%	3,623	13.9%	7,688	12.6%
\$200,000+	782	38.6%	6,552	25.2%	11,848	19.4%
Median Household Income	\$161,160		\$120,048		\$107,515	
Average Household Income	\$193,174		\$157,335		\$139,647	
Per Capita Income	\$57,902		\$51,650		\$46,011	

2024 Households by Income	1 mile		3 miles		5 miles	
	Number	Percent	Number	Percent	Number	Percent
<\$15,000	71	2.9%	1,011	3.5%	2,525	3.7%
\$15,000 - \$24,999	37	1.5%	762	2.6%	2,098	3.1%
\$25,000 - \$34,999	32	1.3%	761	2.6%	2,173	3.2%
\$35,000 - \$49,999	119	4.9%	2,124	7.3%	5,271	7.7%
\$50,000 - \$74,999	128	5.3%	3,277	11.2%	9,205	13.4%
\$75,000 - \$99,999	158	6.6%	2,764	9.5%	7,112	10.4%
\$100,000 - \$149,999	498	20.7%	6,551	22.5%	16,684	24.3%
\$150,000 - \$199,999	412	17.1%	4,449	15.3%	9,769	14.2%
\$200,000+	951	39.5%	7,450	25.6%	13,777	20.1%
Median Household Income	\$165,743		\$124,355		\$112,812	
Average Household Income	\$203,976		\$165,918		\$149,732	
Per Capita Income	\$61,180		\$54,481		\$49,366	

Data Note: Income is expressed in current dollars.

Source: U.S. Census Bureau, Census 2010 Summary File 1. Esri forecasts for 2019 and 2024.



Demographic and Income Comparison Profile

17600-17698 US-59 S
 17600-17698 US-59 S, Sugar Land, Texas, 77479
 Rings: 1, 3, 5 mile radii

Prepared by Esri
 Latitude: 29.58142
 Longitude: -95.64983

2010 Population by Age	1 mile		3 miles		5 miles	
	Number	Percent	Number	Percent	Number	Percent
Age 0 - 4	421	8.2%	3,926	5.7%	9,156	6.0%
Age 5 - 9	450	8.7%	5,398	7.9%	11,380	7.4%
Age 10 - 14	452	8.8%	6,178	9.0%	12,862	8.4%
Age 15 - 19	345	6.7%	5,241	7.7%	11,585	7.6%
Age 20 - 24	197	3.8%	3,100	4.5%	7,797	5.1%
Age 25 - 34	541	10.5%	6,537	9.6%	16,910	11.0%
Age 35 - 44	938	18.2%	10,799	15.8%	23,492	15.3%
Age 45 - 54	919	17.9%	12,687	18.6%	27,436	17.9%
Age 55 - 64	575	11.2%	8,754	12.8%	19,805	12.9%
Age 65 - 74	194	3.8%	3,429	5.0%	7,921	5.2%
Age 75 - 84	97	1.9%	1,591	2.3%	3,569	2.3%
Age 85+	17	0.3%	732	1.1%	1,402	0.9%

2019 Population by Age	1 mile		3 miles		5 miles	
	Number	Percent	Number	Percent	Number	Percent
Age 0 - 4	441	6.5%	4,319	5.4%	10,302	5.6%
Age 5 - 9	534	7.9%	5,243	6.6%	11,931	6.5%
Age 10 - 14	624	9.2%	6,117	7.7%	13,576	7.4%
Age 15 - 19	522	7.7%	5,795	7.3%	12,578	6.8%
Age 20 - 24	341	5.0%	4,143	5.2%	9,818	5.3%
Age 25 - 34	673	9.9%	9,276	11.6%	23,505	12.8%
Age 35 - 44	904	13.3%	10,371	13.0%	24,268	13.2%
Age 45 - 54	1,166	17.2%	12,436	15.6%	27,642	15.0%
Age 55 - 64	962	14.2%	12,328	15.4%	27,800	15.1%
Age 65 - 74	424	6.2%	6,467	8.1%	15,481	8.4%
Age 75 - 84	165	2.4%	2,384	3.0%	5,556	3.0%
Age 85+	35	0.5%	929	1.2%	1,890	1.0%

2024 Population by Age	1 mile		3 miles		5 miles	
	Number	Percent	Number	Percent	Number	Percent
Age 0 - 4	552	6.8%	5,014	5.6%	11,874	5.7%
Age 5 - 9	636	7.9%	5,774	6.5%	13,061	6.3%
Age 10 - 14	698	8.6%	6,286	7.0%	14,340	6.9%
Age 15 - 19	622	7.7%	5,943	6.6%	13,343	6.5%
Age 20 - 24	355	4.4%	3,943	4.4%	9,358	4.5%
Age 25 - 34	899	11.1%	10,796	12.1%	26,659	12.9%
Age 35 - 44	1,095	13.6%	13,087	14.6%	30,535	14.8%
Age 45 - 54	1,220	15.1%	12,286	13.7%	27,638	13.4%
Age 55 - 64	1,069	13.2%	12,767	14.3%	28,564	13.8%
Age 65 - 74	625	7.7%	8,772	9.8%	20,459	9.9%
Age 75 - 84	256	3.2%	3,633	4.1%	8,439	4.1%
Age 85+	49	0.6%	1,156	1.3%	2,346	1.1%

Source: U.S. Census Bureau, Census 2010 Summary File 1. Esri forecasts for 2019 and 2024.



Demographic and Income Comparison Profile

17600-17698 US-59 S
 17600-17698 US-59 S, Sugar Land, Texas, 77479
 Rings: 1, 3, 5 mile radii

Prepared by Esri
 Latitude: 29.58142
 Longitude: -95.64983

2010 Race and Ethnicity	1 mile		3 miles		5 miles	
	Number	Percent	Number	Percent	Number	Percent
White Alone	1,712	33.3%	34,127	49.9%	78,658	51.3%
Black Alone	221	4.3%	5,327	7.8%	17,544	11.4%
American Indian Alone	8	0.2%	141	0.2%	396	0.3%
Asian Alone	2,987	58.0%	25,433	37.2%	47,275	30.8%
Pacific Islander Alone	0	0.0%	26	0.0%	64	0.0%
Some Other Race Alone	76	1.5%	1,231	1.8%	4,650	3.0%
Two or More Races	144	2.8%	2,086	3.1%	4,726	3.1%
Hispanic Origin (Any Race)	306	5.9%	6,229	9.1%	19,624	12.8%

2019 Race and Ethnicity	1 mile		3 miles		5 miles	
	Number	Percent	Number	Percent	Number	Percent
White Alone	1,478	21.8%	29,167	36.5%	71,594	38.8%
Black Alone	276	4.1%	6,638	8.3%	22,897	12.4%
American Indian Alone	9	0.1%	168	0.2%	500	0.3%
Asian Alone	4,701	69.2%	38,996	48.9%	75,271	40.8%
Pacific Islander Alone	0	0.0%	37	0.0%	94	0.1%
Some Other Race Alone	102	1.5%	1,711	2.1%	6,862	3.7%
Two or More Races	225	3.3%	3,091	3.9%	7,131	3.9%
Hispanic Origin (Any Race)	418	6.2%	8,215	10.3%	27,153	14.7%

2024 Race and Ethnicity	1 mile		3 miles		5 miles	
	Number	Percent	Number	Percent	Number	Percent
White Alone	1,500	18.6%	29,156	32.6%	72,659	35.2%
Black Alone	340	4.2%	7,830	8.8%	27,198	13.2%
American Indian Alone	10	0.1%	185	0.2%	561	0.3%
Asian Alone	5,815	72.0%	46,525	52.0%	89,356	43.2%
Pacific Islander Alone	0	0.0%	40	0.0%	102	0.0%
Some Other Race Alone	128	1.6%	2,052	2.3%	8,291	4.0%
Two or More Races	282	3.5%	3,668	4.1%	8,448	4.1%
Hispanic Origin (Any Race)	538	6.7%	10,084	11.3%	33,296	16.1%

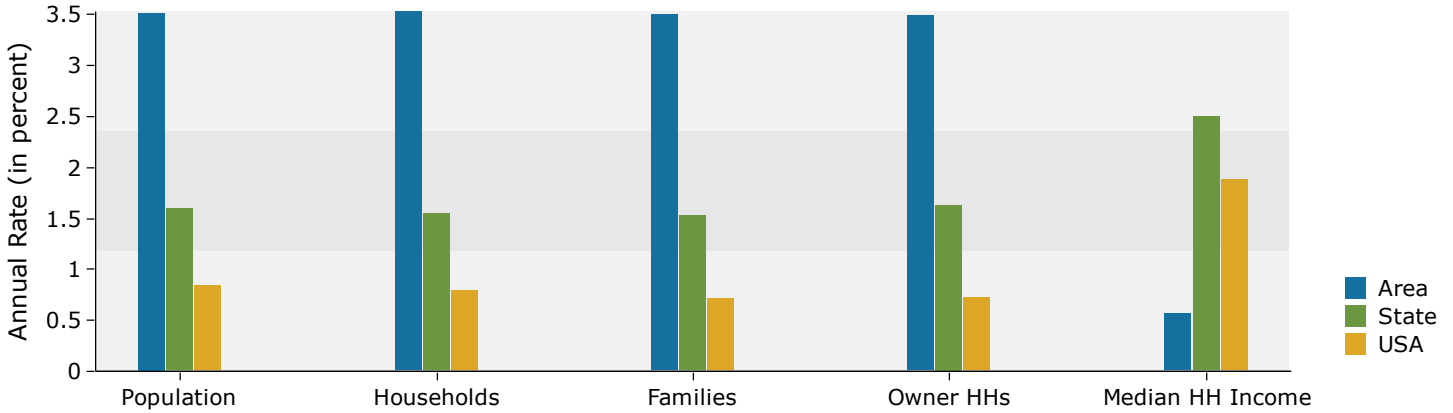
Source: U.S. Census Bureau, Census 2010 Summary File 1. Esri forecasts for 2019 and 2024.

17600-17698 US-59 S
 17600-17698 US-59 S, Sugar Land, Texas, 77479
 Rings: 1, 3, 5 mile radii

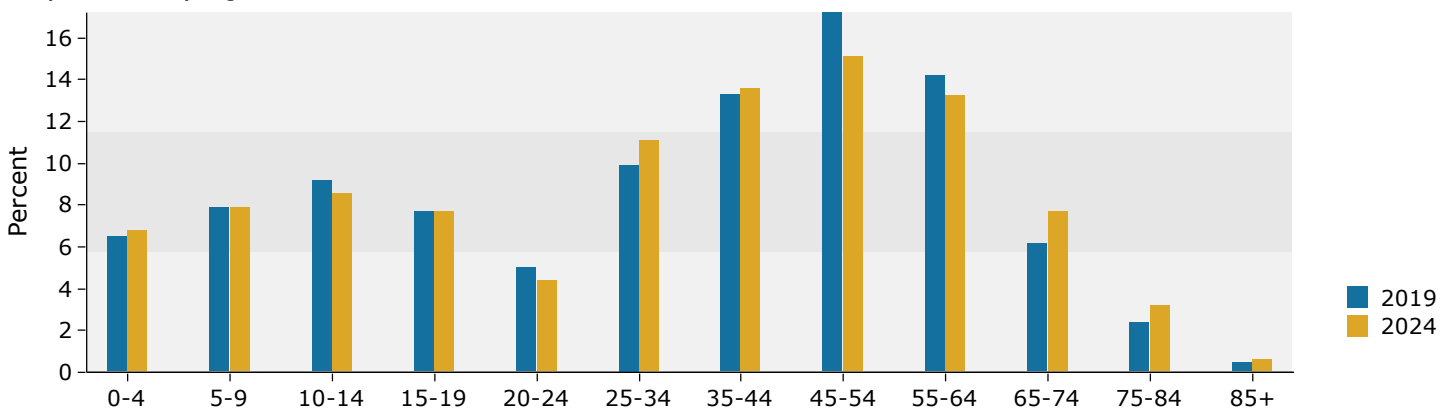
Prepared by Esri
 Latitude: 29.58142
 Longitude: -95.64983

1 mile

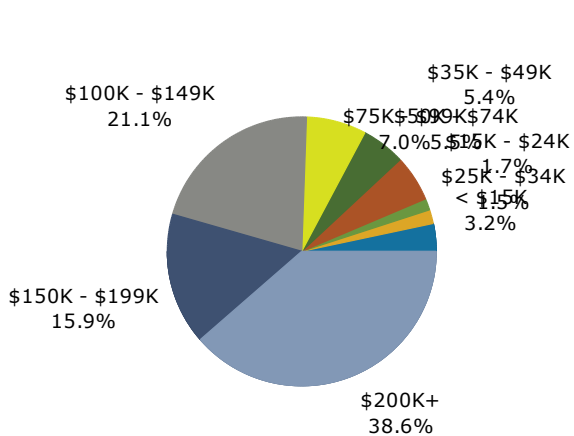
Trends 2019-2024



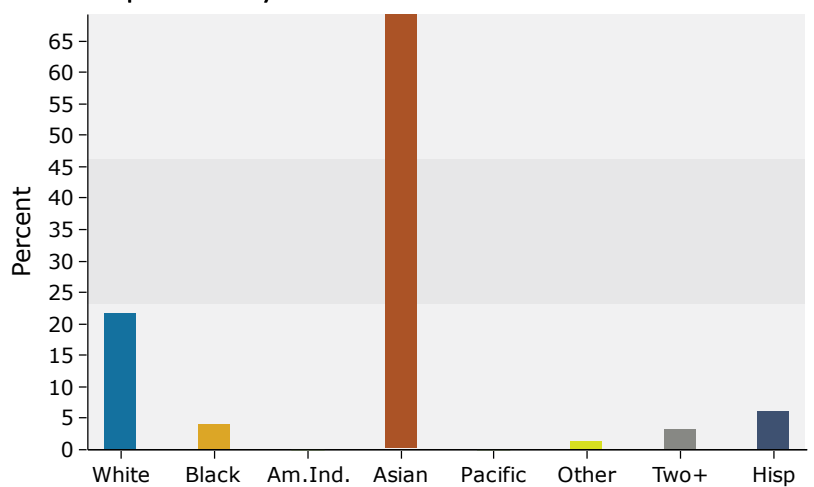
Population by Age



2019 Household Income



2019 Population by Race



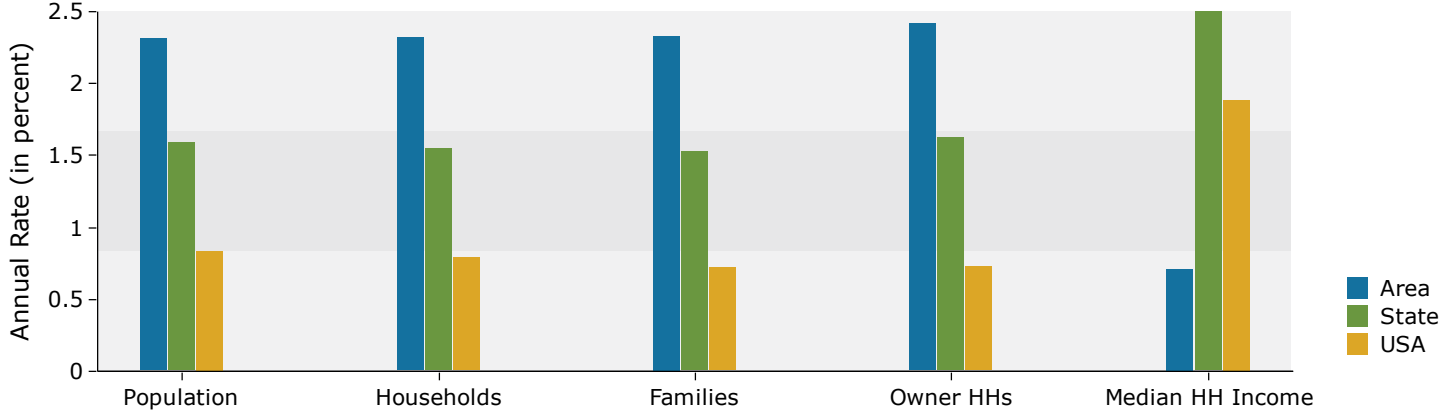
Source: U.S. Census Bureau, Census 2010 Summary File 1. Esri forecasts for 2019 and 2024.

17600-17698 US-59 S
 17600-17698 US-59 S, Sugar Land, Texas, 77479
 Rings: 1, 3, 5 mile radii

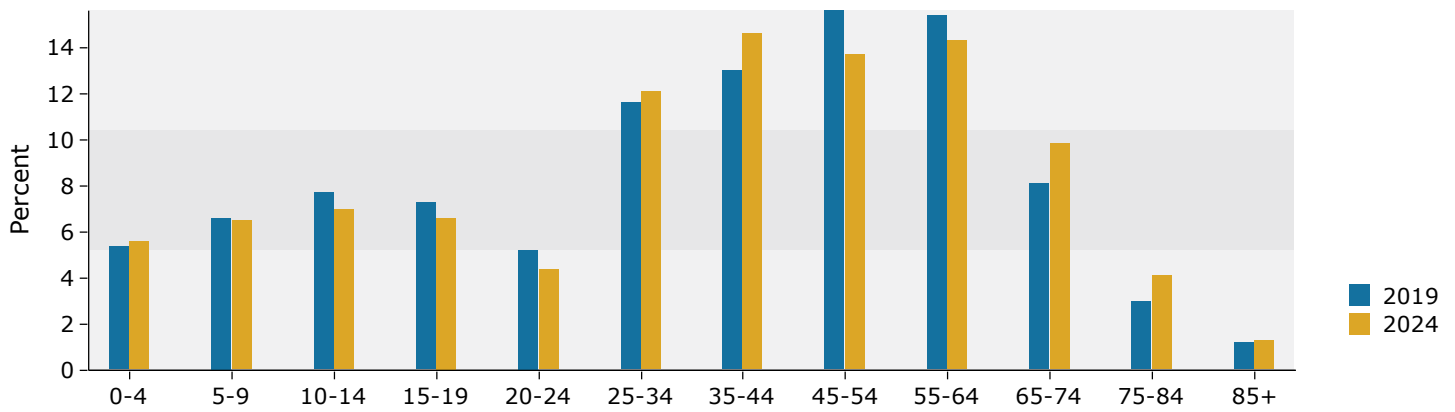
Prepared by Esri
 Latitude: 29.58142
 Longitude: -95.64983

3 miles

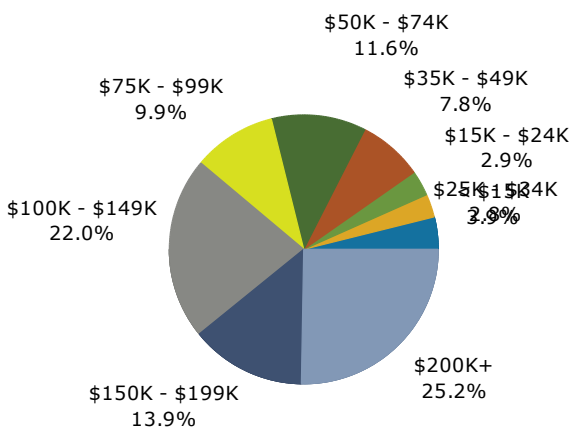
Trends 2019-2024



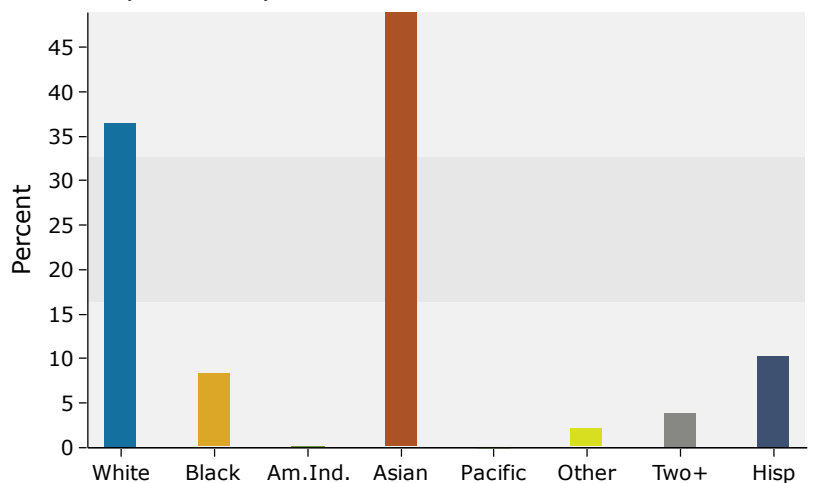
Population by Age



2019 Household Income



2019 Population by Race



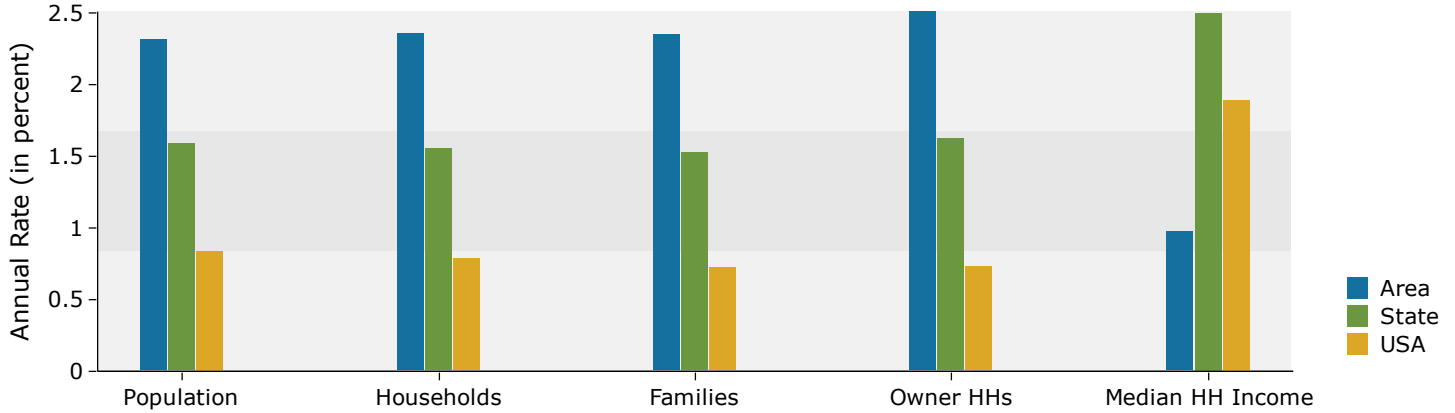
Source: U.S. Census Bureau, Census 2010 Summary File 1. Esri forecasts for 2019 and 2024.

17600-17698 US-59 S
 17600-17698 US-59 S, Sugar Land, Texas, 77479
 Rings: 1, 3, 5 mile radii

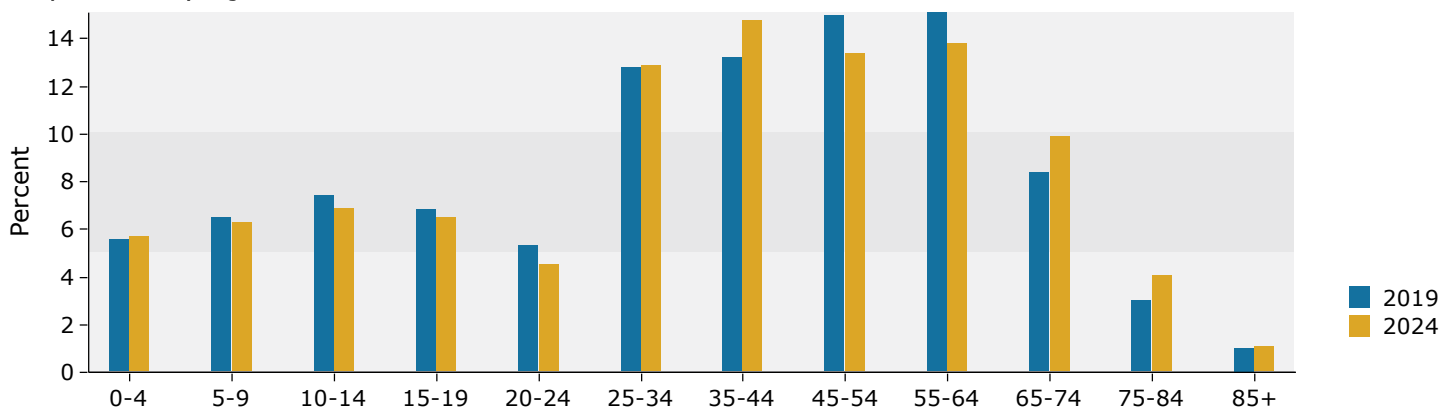
Prepared by Esri
 Latitude: 29.58142
 Longitude: -95.64983

5 miles

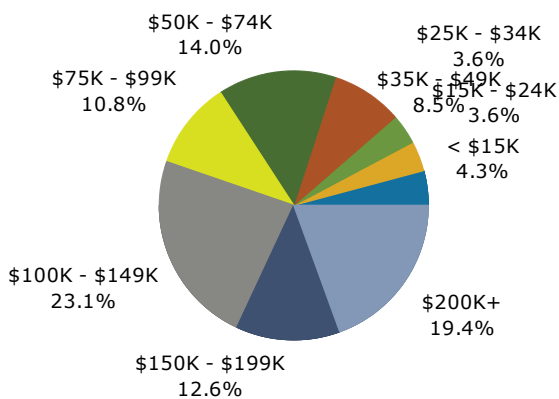
Trends 2019-2024



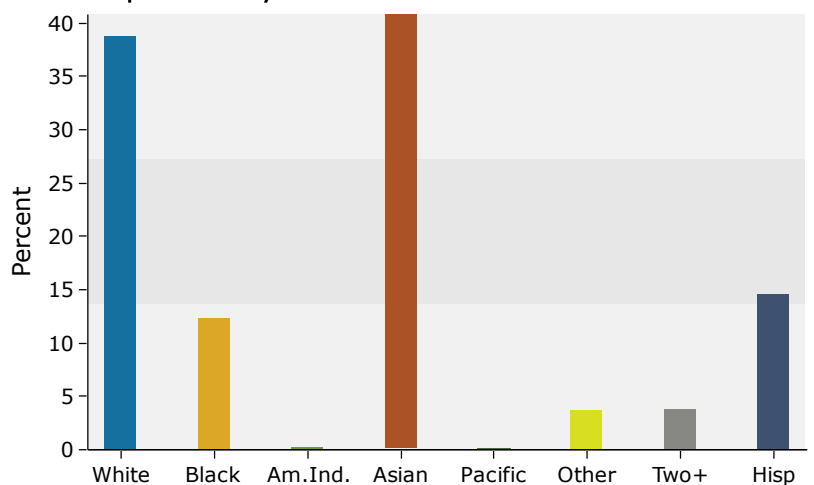
Population by Age



2019 Household Income



2019 Population by Race



Source: U.S. Census Bureau, Census 2010 Summary File 1. Esri forecasts for 2019 and 2024.