



# Demographic and Income Comparison Profile

Coles Crossing South  
 Coles Crossing South, Texas  
 Rings: 1, 3, 5 mile radii

Prepared by Esri  
 Latitude: 29.95389  
 Longitude: -95.67028

	1 mile	3 miles	5 miles
<b>Census 2010 Summary</b>			
Population	6,266	62,887	184,414
Households	2,183	20,539	62,860
Families	1,715	16,797	49,730
Average Household Size	2.86	3.06	2.93
Owner Occupied Housing Units	1,675	17,085	48,839
Renter Occupied Housing Units	508	3,454	14,021
Median Age	35.3	33.7	34.1
<b>2019 Summary</b>			
Population	7,668	84,136	237,393
Households	2,687	27,295	79,210
Families	2,077	22,252	63,042
Average Household Size	2.85	3.08	2.99
Owner Occupied Housing Units	1,839	22,409	61,978
Renter Occupied Housing Units	848	4,886	17,232
Median Age	35.3	34.5	35.1
Median Household Income	\$105,966	\$107,246	\$100,216
Average Household Income	\$128,414	\$131,663	\$123,148
<b>2024 Summary</b>			
Population	8,336	93,894	261,222
Households	2,925	30,364	86,539
Families	2,249	24,734	68,979
Average Household Size	2.85	3.09	3.02
Owner Occupied Housing Units	1,968	24,901	68,045
Renter Occupied Housing Units	956	5,463	18,494
Median Age	33.8	33.8	34.6
Median Household Income	\$114,066	\$116,310	\$108,034
Average Household Income	\$146,065	\$151,033	\$140,542
<b>Trends: 2019-2024 Annual Rate</b>			
Population	1.68%	2.22%	1.93%
Households	1.71%	2.15%	1.79%
Families	1.60%	2.14%	1.82%
Owner Households	1.37%	2.13%	1.89%
Median Household Income	1.48%	1.64%	1.51%

Source: U.S. Census Bureau, Census 2010 Summary File 1. Esri forecasts for 2019 and 2024.



# Demographic and Income Comparison Profile

Coles Crossing South  
 Coles Crossing South, Texas  
 Rings: 1, 3, 5 mile radii

Prepared by Esri  
 Latitude: 29.95389  
 Longitude: -95.67028

2019 Households by Income	1 mile		3 miles		5 miles	
	Number	Percent	Number	Percent	Number	Percent
<\$15,000	53	2.0%	949	3.5%	3,301	4.2%
\$15,000 - \$24,999	95	3.5%	970	3.6%	2,979	3.8%
\$25,000 - \$34,999	70	2.6%	1,057	3.9%	3,943	5.0%
\$35,000 - \$49,999	370	13.8%	1,998	7.3%	6,902	8.7%
\$50,000 - \$74,999	302	11.2%	3,614	13.2%	11,970	15.1%
\$75,000 - \$99,999	330	12.3%	3,439	12.6%	10,372	13.1%
\$100,000 - \$149,999	672	25.0%	7,298	26.7%	19,132	24.2%
\$150,000 - \$199,999	387	14.4%	3,420	12.5%	8,955	11.3%
\$200,000+	407	15.1%	4,549	16.7%	11,657	14.7%
Median Household Income	\$105,966		\$107,246		\$100,216	
Average Household Income	\$128,414		\$131,663		\$123,148	
Per Capita Income	\$43,179		\$42,651		\$41,091	

2024 Households by Income	1 mile		3 miles		5 miles	
	Number	Percent	Number	Percent	Number	Percent
<\$15,000	50	1.7%	1,022	3.4%	3,187	3.7%
\$15,000 - \$24,999	89	3.0%	952	3.1%	2,756	3.2%
\$25,000 - \$34,999	63	2.2%	1,007	3.3%	3,593	4.2%
\$35,000 - \$49,999	368	12.6%	1,910	6.3%	6,459	7.5%
\$50,000 - \$74,999	296	10.1%	3,509	11.6%	11,749	13.6%
\$75,000 - \$99,999	328	11.2%	3,417	11.3%	10,540	12.2%
\$100,000 - \$149,999	700	23.9%	7,709	25.4%	21,026	24.3%
\$150,000 - \$199,999	466	15.9%	4,340	14.3%	11,384	13.2%
\$200,000+	564	19.3%	6,498	21.4%	15,845	18.3%
Median Household Income	\$114,066		\$116,310		\$108,034	
Average Household Income	\$146,065		\$151,033		\$140,542	
Per Capita Income	\$49,216		\$48,744		\$46,566	

**Data Note:** Income is expressed in current dollars.

**Source:** U.S. Census Bureau, Census 2010 Summary File 1. Esri forecasts for 2019 and 2024.



# Demographic and Income Comparison Profile

Coles Crossing South  
 Coles Crossing South, Texas  
 Rings: 1, 3, 5 mile radii

Prepared by Esri  
 Latitude: 29.95389  
 Longitude: -95.67028

2010 Population by Age	1 mile		3 miles		5 miles	
	Number	Percent	Number	Percent	Number	Percent
Age 0 - 4	482	7.7%	5,250	8.3%	14,081	7.6%
Age 5 - 9	637	10.2%	6,110	9.7%	16,046	8.7%
Age 10 - 14	616	9.8%	5,963	9.5%	16,524	9.0%
Age 15 - 19	432	6.9%	4,439	7.1%	13,731	7.4%
Age 20 - 24	282	4.5%	2,797	4.4%	9,586	5.2%
Age 25 - 34	651	10.4%	8,129	12.9%	24,461	13.3%
Age 35 - 44	1,221	19.5%	11,871	18.9%	30,934	16.8%
Age 45 - 54	1,019	16.3%	9,261	14.7%	29,065	15.8%
Age 55 - 64	555	8.9%	5,566	8.9%	18,652	10.1%
Age 65 - 74	251	4.0%	2,405	3.8%	7,523	4.1%
Age 75 - 84	97	1.5%	866	1.4%	2,942	1.6%
Age 85+	21	0.3%	231	0.4%	868	0.5%

2019 Population by Age	1 mile		3 miles		5 miles	
	Number	Percent	Number	Percent	Number	Percent
Age 0 - 4	545	7.1%	6,498	7.7%	17,088	7.2%
Age 5 - 9	623	8.1%	7,197	8.6%	18,405	7.8%
Age 10 - 14	718	9.4%	7,583	9.0%	19,396	8.2%
Age 15 - 19	558	7.3%	5,999	7.1%	16,713	7.0%
Age 20 - 24	419	5.5%	4,372	5.2%	13,690	5.8%
Age 25 - 34	934	12.2%	11,005	13.1%	32,989	13.9%
Age 35 - 44	1,227	16.0%	13,599	16.2%	35,591	15.0%
Age 45 - 54	1,132	14.8%	12,236	14.5%	33,718	14.2%
Age 55 - 64	853	11.1%	8,729	10.4%	27,736	11.7%
Age 65 - 74	464	6.1%	4,879	5.8%	15,460	6.5%
Age 75 - 84	158	2.1%	1,640	1.9%	5,243	2.2%
Age 85+	36	0.5%	398	0.5%	1,363	0.6%

2024 Population by Age	1 mile		3 miles		5 miles	
	Number	Percent	Number	Percent	Number	Percent
Age 0 - 4	625	7.5%	7,580	8.1%	19,726	7.6%
Age 5 - 9	661	7.9%	8,027	8.5%	20,371	7.8%
Age 10 - 14	652	7.8%	7,774	8.3%	20,033	7.7%
Age 15 - 19	615	7.4%	6,625	7.1%	17,522	6.7%
Age 20 - 24	491	5.9%	4,316	4.6%	13,254	5.1%
Age 25 - 34	1,292	15.5%	14,744	15.7%	41,585	15.9%
Age 35 - 44	1,225	14.7%	15,164	16.2%	40,489	15.5%
Age 45 - 54	1,089	13.1%	12,209	13.0%	32,981	12.6%
Age 55 - 64	879	10.5%	8,939	9.5%	27,333	10.5%
Age 65 - 74	533	6.4%	5,721	6.1%	18,781	7.2%
Age 75 - 84	225	2.7%	2,302	2.5%	7,490	2.9%
Age 85+	47	0.6%	492	0.5%	1,656	0.6%

Source: U.S. Census Bureau, Census 2010 Summary File 1. Esri forecasts for 2019 and 2024.



# Demographic and Income Comparison Profile

Coles Crossing South  
 Coles Crossing South, Texas  
 Rings: 1, 3, 5 mile radii

Prepared by Esri  
 Latitude: 29.95389  
 Longitude: -95.67028

2010 Race and Ethnicity	1 mile		3 miles		5 miles	
	Number	Percent	Number	Percent	Number	Percent
White Alone	4,913	78.4%	44,570	70.9%	130,125	70.6%
Black Alone	400	6.4%	6,814	10.8%	20,535	11.1%
American Indian Alone	29	0.5%	294	0.5%	867	0.5%
Asian Alone	535	8.5%	5,954	9.5%	15,950	8.6%
Pacific Islander Alone	2	0.0%	34	0.1%	111	0.1%
Some Other Race Alone	225	3.6%	3,459	5.5%	11,524	6.2%
Two or More Races	162	2.6%	1,762	2.8%	5,302	2.9%
Hispanic Origin (Any Race)	951	15.2%	11,874	18.9%	38,626	20.9%

2019 Race and Ethnicity	1 mile		3 miles		5 miles	
	Number	Percent	Number	Percent	Number	Percent
White Alone	5,542	72.3%	54,393	64.6%	154,205	65.0%
Black Alone	612	8.0%	10,491	12.5%	29,920	12.6%
American Indian Alone	33	0.4%	336	0.4%	1,008	0.4%
Asian Alone	817	10.7%	10,281	12.2%	25,807	10.9%
Pacific Islander Alone	3	0.0%	45	0.1%	138	0.1%
Some Other Race Alone	387	5.0%	5,524	6.6%	17,602	7.4%
Two or More Races	273	3.6%	3,066	3.6%	8,711	3.7%
Hispanic Origin (Any Race)	1,533	20.0%	19,369	23.0%	60,302	25.4%

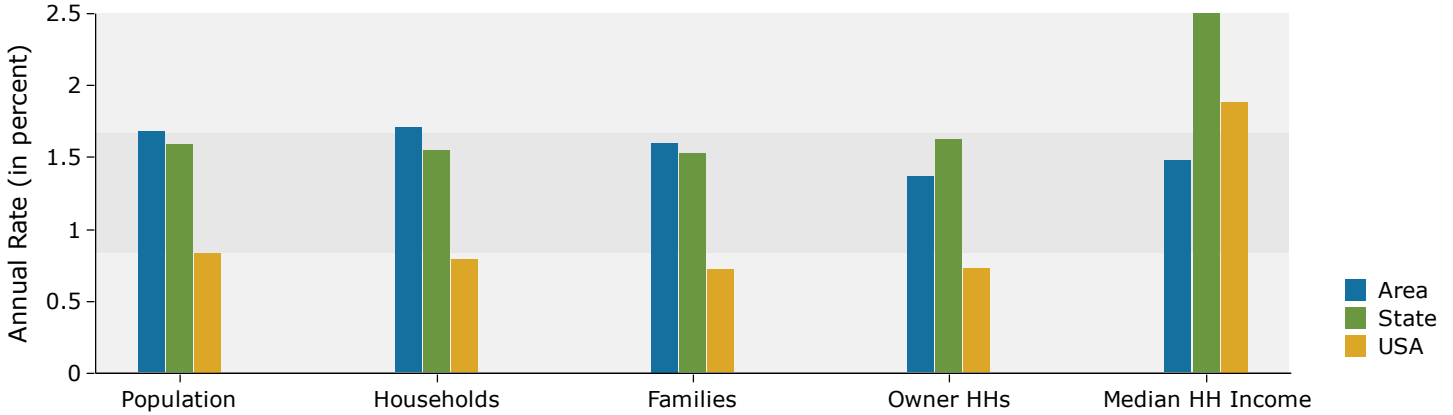
  

2024 Race and Ethnicity	1 mile		3 miles		5 miles	
	Number	Percent	Number	Percent	Number	Percent
White Alone	5,787	69.4%	57,963	61.7%	162,714	62.3%
Black Alone	706	8.5%	12,269	13.1%	34,348	13.1%
American Indian Alone	38	0.5%	374	0.4%	1,121	0.4%
Asian Alone	985	11.8%	12,745	13.6%	31,437	12.0%
Pacific Islander Alone	3	0.0%	54	0.1%	157	0.1%
Some Other Race Alone	478	5.7%	6,682	7.1%	20,841	8.0%
Two or More Races	338	4.1%	3,807	4.1%	10,603	4.1%
Hispanic Origin (Any Race)	1,907	22.9%	24,032	25.6%	73,402	28.1%

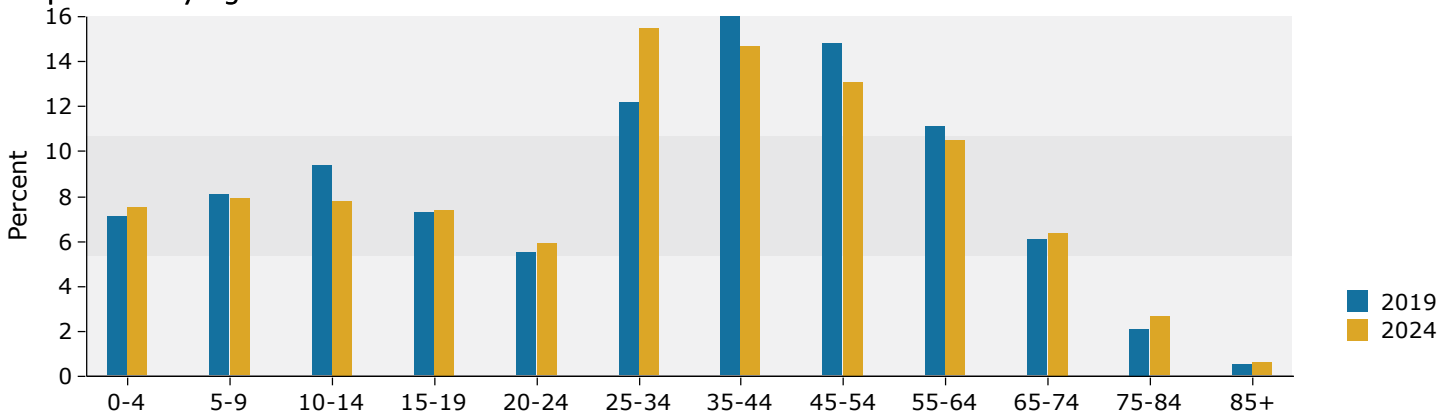
Source: U.S. Census Bureau, Census 2010 Summary File 1. Esri forecasts for 2019 and 2024.

## 1 mile

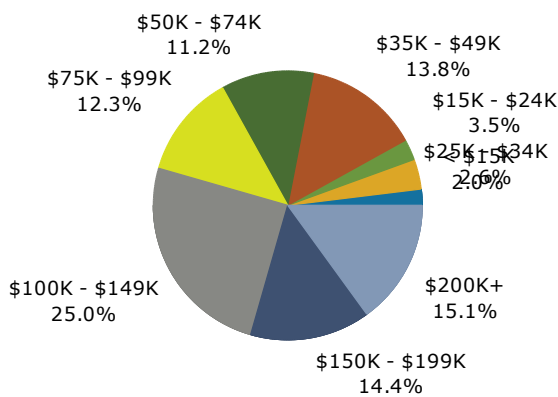
### Trends 2019-2024



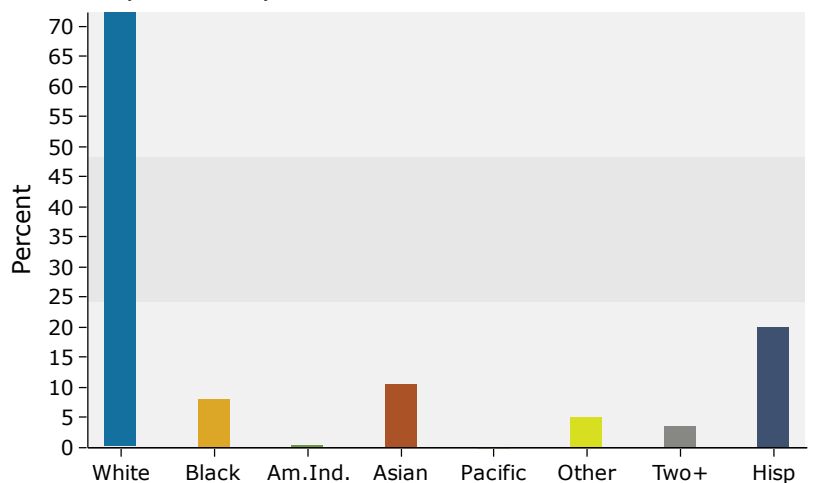
### Population by Age



### 2019 Household Income



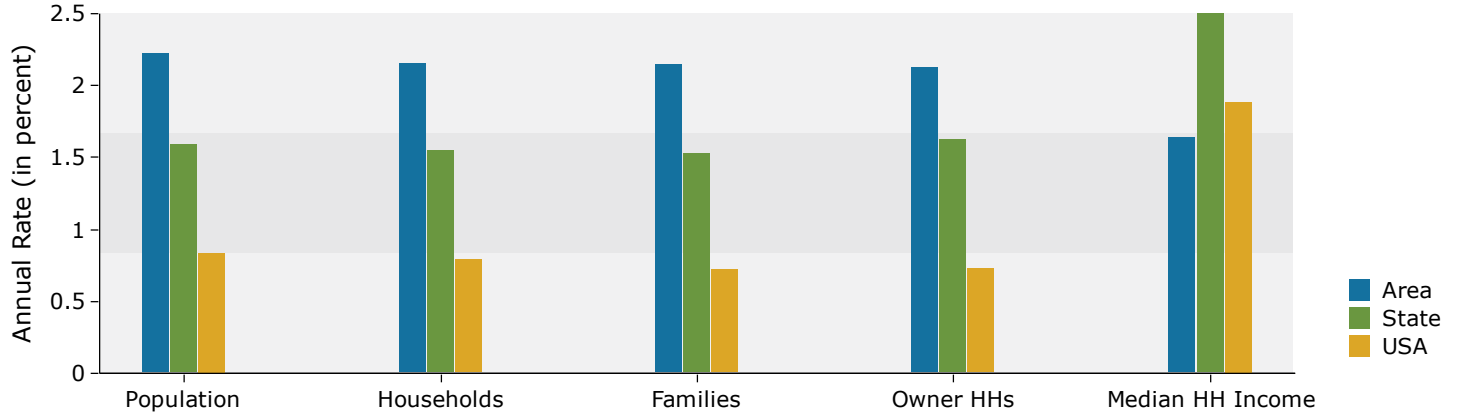
### 2019 Population by Race



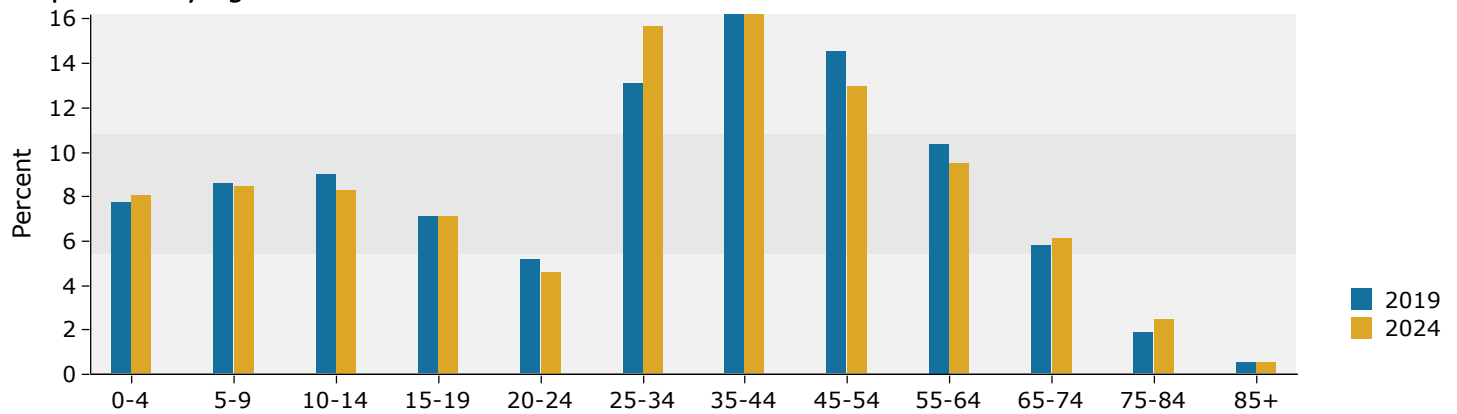
Source: U.S. Census Bureau, Census 2010 Summary File 1. Esri forecasts for 2019 and 2024.

## 3 miles

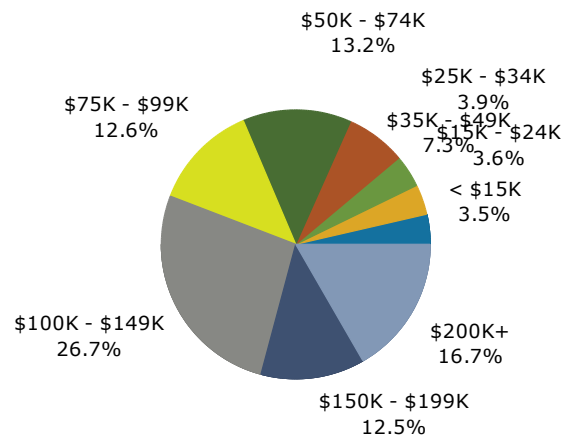
### Trends 2019-2024



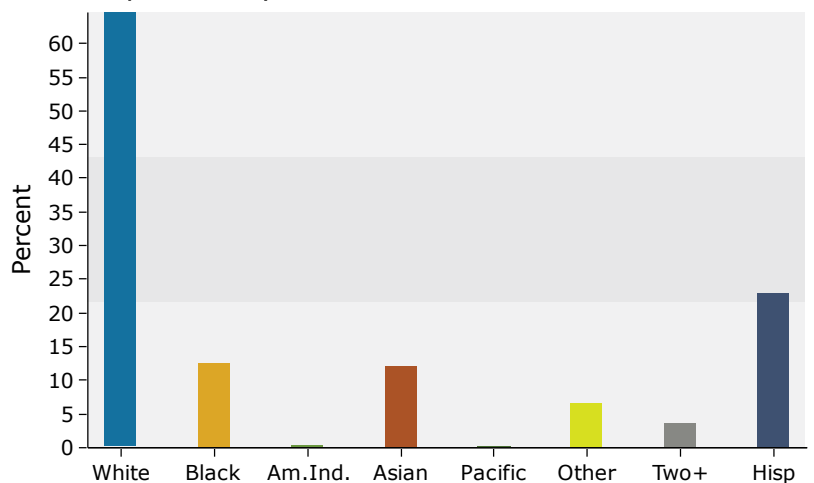
### Population by Age



### 2019 Household Income



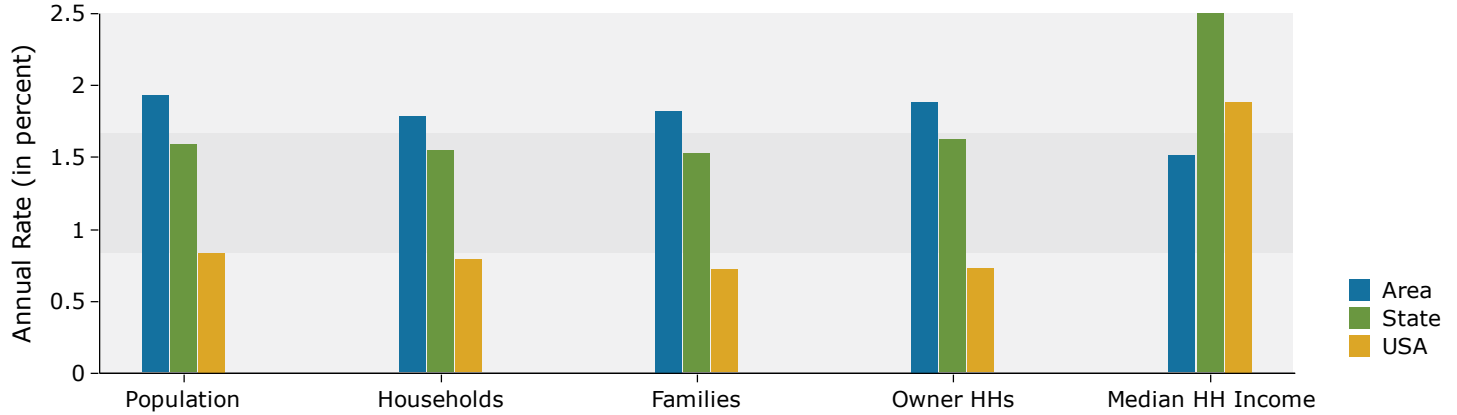
### 2019 Population by Race



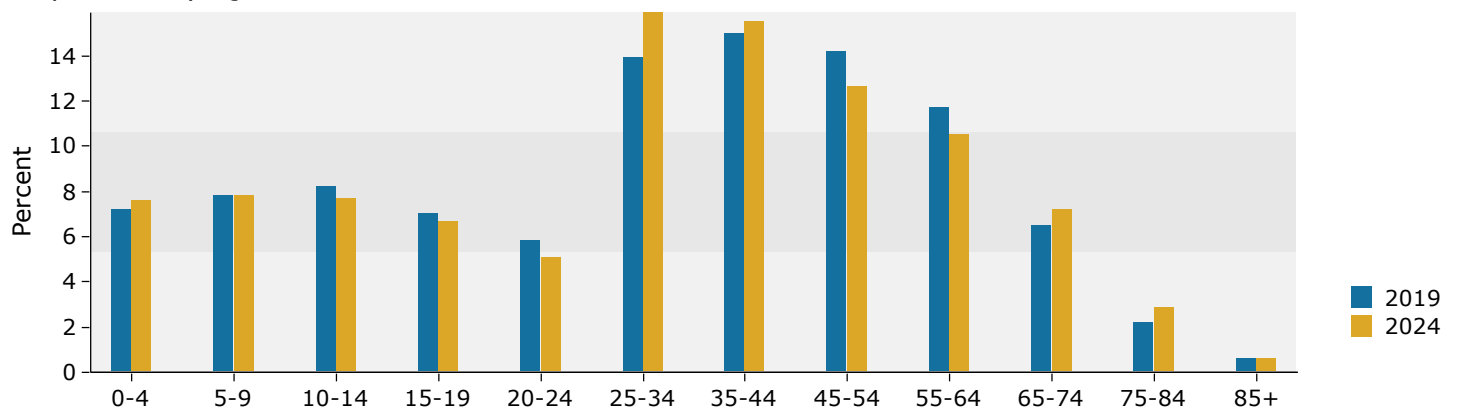
Source: U.S. Census Bureau, Census 2010 Summary File 1. Esri forecasts for 2019 and 2024.

## 5 miles

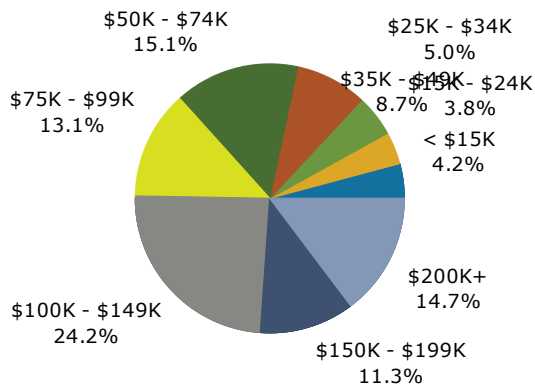
### Trends 2019-2024



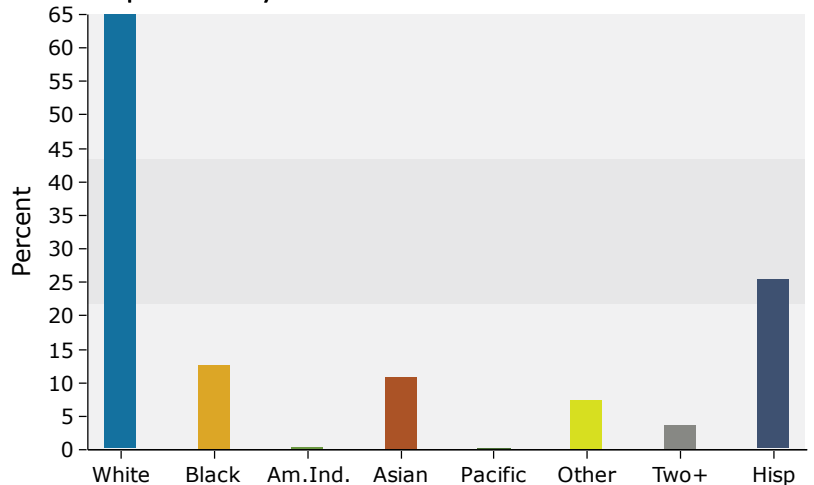
### Population by Age



### 2019 Household Income



### 2019 Population by Race



Source: U.S. Census Bureau, Census 2010 Summary File 1. Esri forecasts for 2019 and 2024.