



# Demographic and Income Comparison Profile

150 East Ave, Schulenburg, Texas, 78956 2  
150 East Ave, Schulenburg, Texas, 78956  
Rings: 1, 3, 5 mile radii

Prepared by Esri  
Latitude: 29.68688  
Longitude: -96.89885

	1 mile	3 miles	5 miles
<b>Census 2010 Summary</b>			
Population	2,012	3,546	4,384
Households	794	1,380	1,738
Families	509	913	1,182
Average Household Size	2.36	2.44	2.41
Owner Occupied Housing Units	499	914	1,216
Renter Occupied Housing Units	295	466	522
Median Age	43.9	43.6	45.0
<b>2018 Summary</b>			
Population	2,049	3,610	4,478
Households	806	1,398	1,768
Families	514	920	1,195
Average Household Size	2.38	2.46	2.43
Owner Occupied Housing Units	538	976	1,294
Renter Occupied Housing Units	268	423	474
Median Age	45.3	44.9	46.4
Median Household Income	\$39,707	\$40,309	\$42,873
Average Household Income	\$54,310	\$55,985	\$60,138
<b>2023 Summary</b>			
Population	2,087	3,670	4,560
Households	819	1,418	1,796
Families	521	930	1,211
Average Household Size	2.39	2.47	2.44
Owner Occupied Housing Units	566	1,019	1,348
Renter Occupied Housing Units	253	399	448
Median Age	44.8	44.6	46.5
Median Household Income	\$43,341	\$44,080	\$47,696
Average Household Income	\$60,612	\$62,759	\$67,762
<b>Trends: 2018-2023 Annual Rate</b>			
Population	0.37%	0.33%	0.36%
Households	0.32%	0.28%	0.31%
Families	0.27%	0.22%	0.27%
Owner Households	1.02%	0.87%	0.82%
Median Household Income	1.77%	1.80%	2.15%

Source: U.S. Census Bureau, Census 2010 Summary File 1. Esri forecasts for 2018 and 2023.



# Demographic and Income Comparison Profile

150 East Ave, Schulenburg, Texas, 78956 2  
 150 East Ave, Schulenburg, Texas, 78956  
 Rings: 1, 3, 5 mile radii

Prepared by Esri  
 Latitude: 29.68688  
 Longitude: -96.89885

2018 Households by Income	1 mile		3 miles		5 miles	
	Number	Percent	Number	Percent	Number	Percent
<\$15,000	138	17.1%	231	16.5%	277	15.7%
\$15,000 - \$24,999	91	11.3%	156	11.2%	194	11.0%
\$25,000 - \$34,999	123	15.3%	211	15.1%	245	13.9%
\$35,000 - \$49,999	131	16.3%	230	16.5%	278	15.7%
\$50,000 - \$74,999	114	14.1%	208	14.9%	283	16.0%
\$75,000 - \$99,999	103	12.8%	157	11.2%	203	11.5%
\$100,000 - \$149,999	88	10.9%	161	11.5%	217	12.3%
\$150,000 - \$199,999	7	0.9%	19	1.4%	28	1.6%
\$200,000+	12	1.5%	24	1.7%	44	2.5%
Median Household Income	\$39,707		\$40,309		\$42,873	
Average Household Income	\$54,310		\$55,985		\$60,138	
Per Capita Income	\$22,346		\$22,764		\$24,473	

2023 Households by Income	1 mile		3 miles		5 miles	
	Number	Percent	Number	Percent	Number	Percent
<\$15,000	123	15.0%	205	14.5%	244	13.6%
\$15,000 - \$24,999	79	9.6%	135	9.5%	166	9.2%
\$25,000 - \$34,999	121	14.8%	208	14.7%	238	13.3%
\$35,000 - \$49,999	135	16.5%	236	16.6%	283	15.8%
\$50,000 - \$74,999	117	14.3%	210	14.8%	284	15.8%
\$75,000 - \$99,999	113	13.8%	173	12.2%	224	12.5%
\$100,000 - \$149,999	108	13.2%	200	14.1%	271	15.1%
\$150,000 - \$199,999	8	1.0%	22	1.6%	33	1.8%
\$200,000+	14	1.7%	29	2.0%	53	3.0%
Median Household Income	\$43,341		\$44,080		\$47,696	
Average Household Income	\$60,612		\$62,759		\$67,762	
Per Capita Income	\$24,764		\$25,364		\$27,412	

**Data Note:** Income is expressed in current dollars.

**Source:** U.S. Census Bureau, Census 2010 Summary File 1. Esri forecasts for 2018 and 2023.



# Demographic and Income Comparison Profile

150 East Ave, Schulenburg, Texas, 78956 2  
 150 East Ave, Schulenburg, Texas, 78956  
 Rings: 1, 3, 5 mile radii

Prepared by Esri  
 Latitude: 29.68688  
 Longitude: -96.89885

2010 Population by Age	1 mile		3 miles		5 miles	
	Number	Percent	Number	Percent	Number	Percent
Age 0 - 4	154	7.7%	263	7.4%	301	6.9%
Age 5 - 9	132	6.6%	234	6.6%	275	6.3%
Age 10 - 14	133	6.6%	243	6.8%	296	6.8%
Age 15 - 19	111	5.5%	209	5.9%	259	5.9%
Age 20 - 24	97	4.8%	168	4.7%	199	4.5%
Age 25 - 34	186	9.2%	330	9.3%	392	8.9%
Age 35 - 44	217	10.8%	385	10.8%	470	10.7%
Age 45 - 54	261	13.0%	474	13.3%	610	13.9%
Age 55 - 64	255	12.7%	456	12.8%	595	13.6%
Age 65 - 74	182	9.0%	341	9.6%	455	10.4%
Age 75 - 84	146	7.3%	255	7.2%	319	7.3%
Age 85+	137	6.8%	192	5.4%	212	4.8%

2018 Population by Age	Number		Percent		Number		Percent	
	Number	Percent	Number	Percent	Number	Percent	Number	Percent
Age 0 - 4	144	7.0%	248	6.9%	287	6.4%		
Age 5 - 9	134	6.5%	233	6.4%	274	6.1%		
Age 10 - 14	130	6.3%	229	6.3%	273	6.1%		
Age 15 - 19	106	5.2%	195	5.4%	238	5.3%		
Age 20 - 24	93	4.5%	172	4.8%	209	4.7%		
Age 25 - 34	199	9.7%	366	10.1%	447	10.0%		
Age 35 - 44	213	10.4%	368	10.2%	444	9.9%		
Age 45 - 54	222	10.8%	408	11.3%	528	11.8%		
Age 55 - 64	291	14.2%	514	14.2%	671	15.0%		
Age 65 - 74	242	11.8%	434	12.0%	571	12.7%		
Age 75 - 84	148	7.2%	261	7.2%	331	7.4%		
Age 85+	128	6.2%	185	5.1%	208	4.6%		

2023 Population by Age	Number		Percent		Number		Percent	
	Number	Percent	Number	Percent	Number	Percent	Number	Percent
Age 0 - 4	143	6.9%	248	6.8%	285	6.2%		
Age 5 - 9	139	6.7%	239	6.5%	281	6.2%		
Age 10 - 14	141	6.8%	244	6.6%	291	6.4%		
Age 15 - 19	116	5.6%	207	5.6%	250	5.5%		
Age 20 - 24	88	4.2%	156	4.2%	185	4.1%		
Age 25 - 34	200	9.6%	366	10.0%	442	9.7%		
Age 35 - 44	221	10.6%	392	10.7%	482	10.6%		
Age 45 - 54	202	9.7%	365	9.9%	467	10.2%		
Age 55 - 64	287	13.8%	505	13.7%	662	14.5%		
Age 65 - 74	271	13.0%	486	13.2%	641	14.1%		
Age 75 - 84	171	8.2%	305	8.3%	389	8.5%		
Age 85+	107	5.1%	161	4.4%	186	4.1%		

Source: U.S. Census Bureau, Census 2010 Summary File 1. Esri forecasts for 2018 and 2023.



# Demographic and Income Comparison Profile

150 East Ave, Schulenburg, Texas, 78956 2  
 150 East Ave, Schulenburg, Texas, 78956  
 Rings: 1, 3, 5 mile radii

Prepared by Esri  
 Latitude: 29.68688  
 Longitude: -96.89885

2010 Race and Ethnicity	1 mile		3 miles		5 miles	
	Number	Percent	Number	Percent	Number	Percent
White Alone	1,507	74.9%	2,606	73.5%	3,361	76.6%
Black Alone	212	10.5%	476	13.4%	502	11.4%
American Indian Alone	19	0.9%	29	0.8%	33	0.8%
Asian Alone	6	0.3%	10	0.3%	12	0.3%
Pacific Islander Alone	0	0.0%	0	0.0%	0	0.0%
Some Other Race Alone	228	11.3%	363	10.2%	405	9.2%
Two or More Races	40	2.0%	63	1.8%	72	1.6%
Hispanic Origin (Any Race)	468	23.3%	749	21.1%	852	19.4%

2018 Race and Ethnicity	1 mile		3 miles		5 miles	
	Number	Percent	Number	Percent	Number	Percent
White Alone	1,476	72.0%	2,562	71.0%	3,329	74.3%
Black Alone	210	10.2%	469	13.0%	496	11.1%
American Indian Alone	19	0.9%	31	0.9%	35	0.8%
Asian Alone	11	0.5%	16	0.4%	18	0.4%
Pacific Islander Alone	0	0.0%	0	0.0%	0	0.0%
Some Other Race Alone	278	13.6%	445	12.3%	500	11.2%
Two or More Races	56	2.7%	87	2.4%	100	2.2%
Hispanic Origin (Any Race)	570	27.8%	919	25.5%	1,050	23.4%

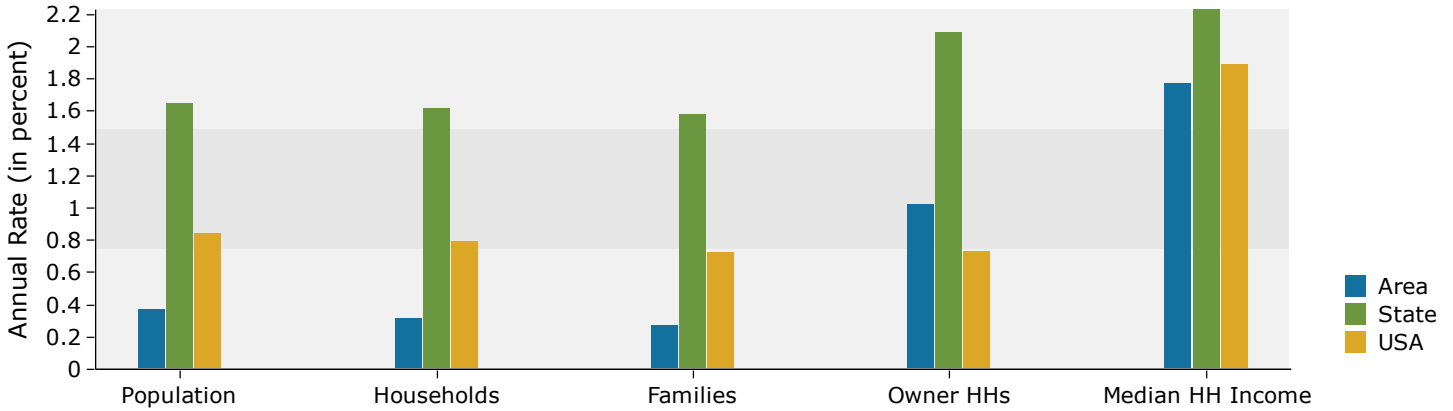
  

2023 Race and Ethnicity	1 mile		3 miles		5 miles	
	Number	Percent	Number	Percent	Number	Percent
White Alone	1,462	70.1%	2,543	69.3%	3,318	72.8%
Black Alone	210	10.1%	468	12.8%	494	10.8%
American Indian Alone	19	0.9%	31	0.8%	37	0.8%
Asian Alone	15	0.7%	22	0.6%	25	0.5%
Pacific Islander Alone	0	0.0%	0	0.0%	0	0.0%
Some Other Race Alone	313	15.0%	502	13.7%	566	12.4%
Two or More Races	67	3.2%	104	2.8%	120	2.6%
Hispanic Origin (Any Race)	655	31.4%	1,061	28.9%	1,217	26.7%

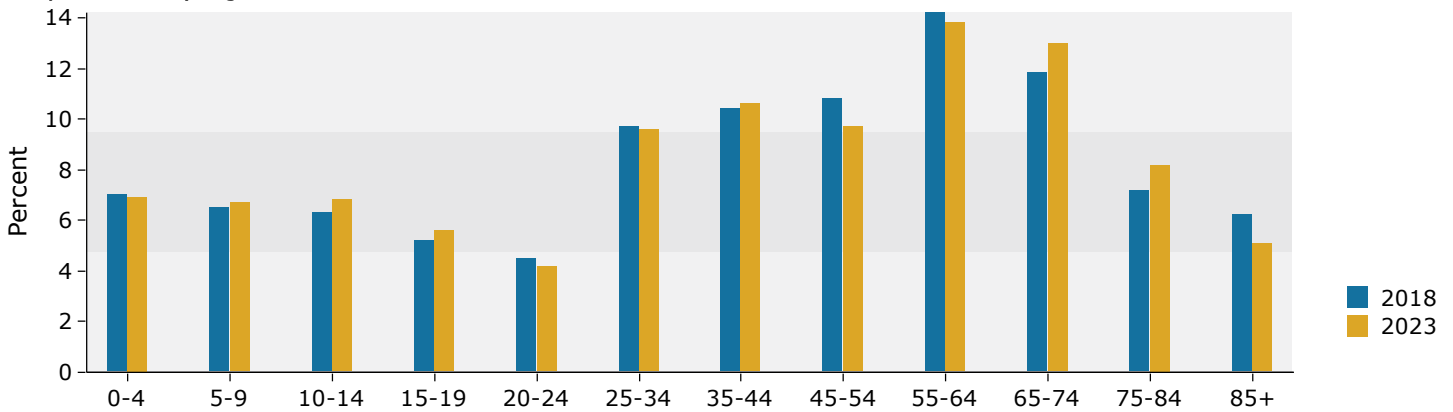
Source: U.S. Census Bureau, Census 2010 Summary File 1. Esri forecasts for 2018 and 2023.

## 1 mile

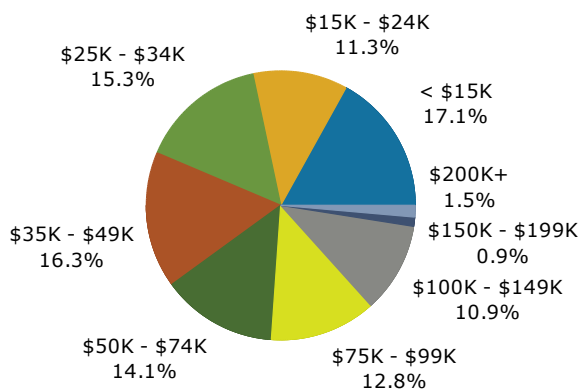
### Trends 2018-2023



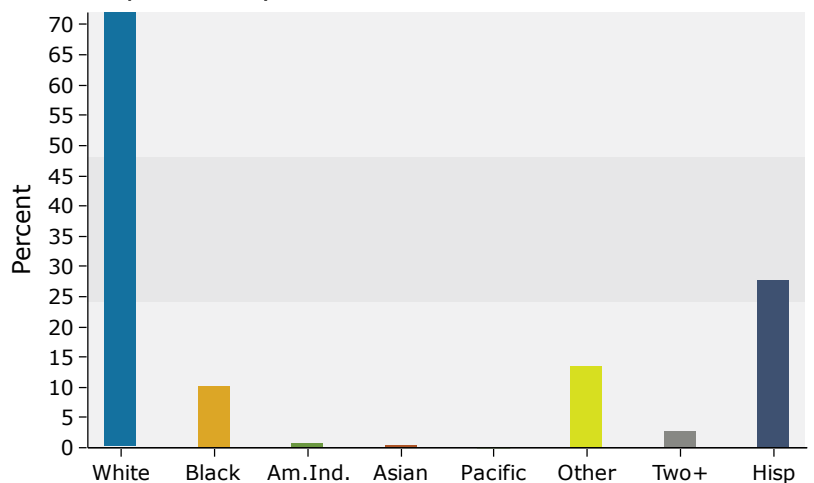
### Population by Age



### 2018 Household Income



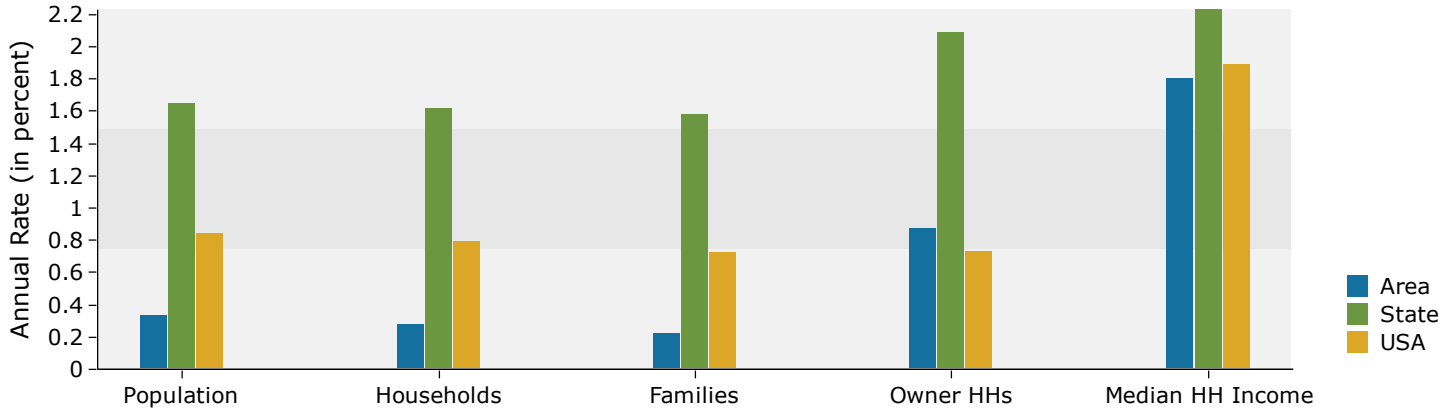
### 2018 Population by Race



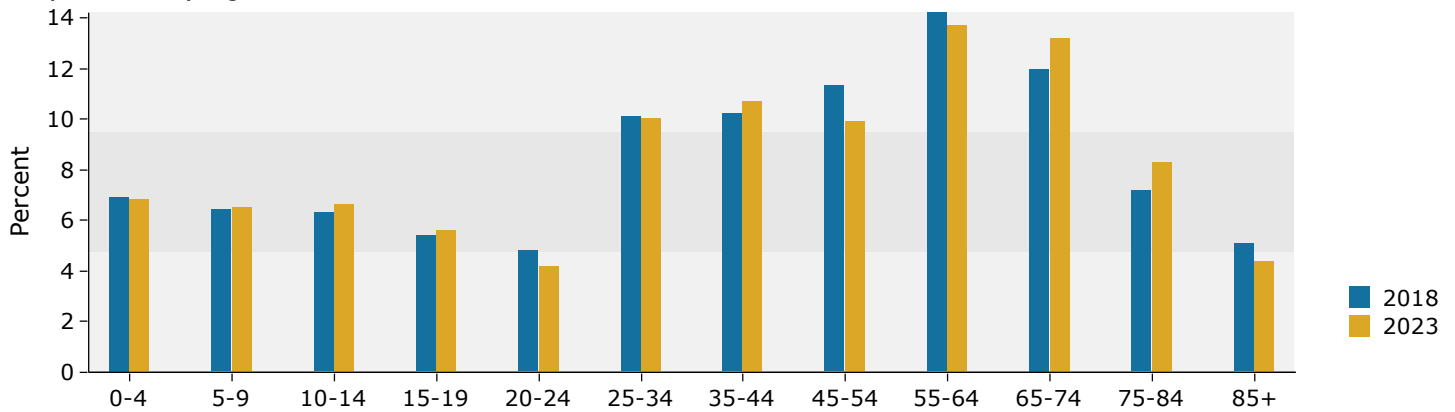
Source: U.S. Census Bureau, Census 2010 Summary File 1. Esri forecasts for 2018 and 2023.

### 3 miles

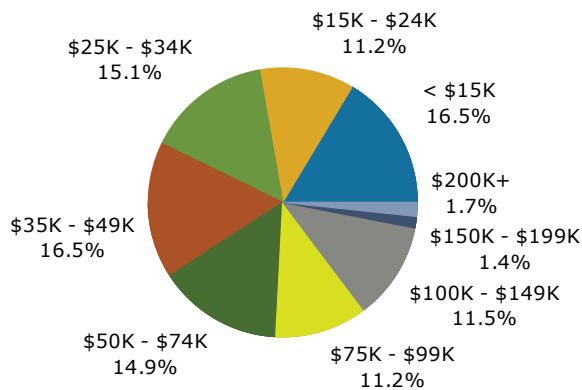
#### Trends 2018-2023



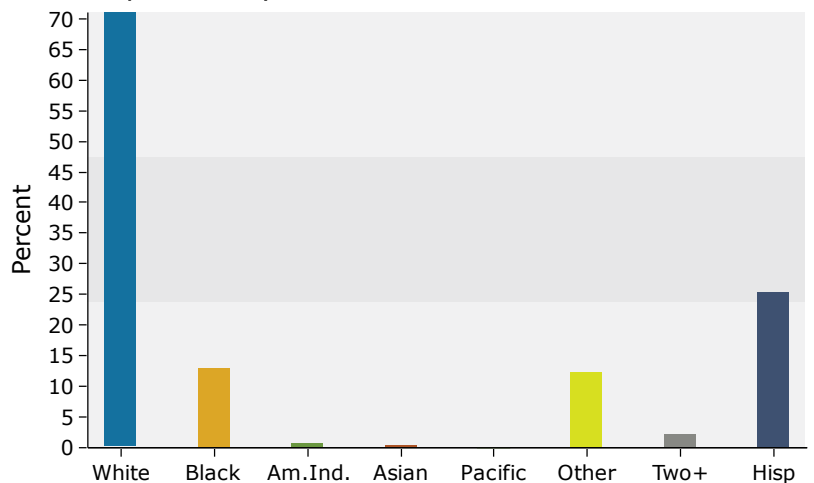
#### Population by Age



#### 2018 Household Income



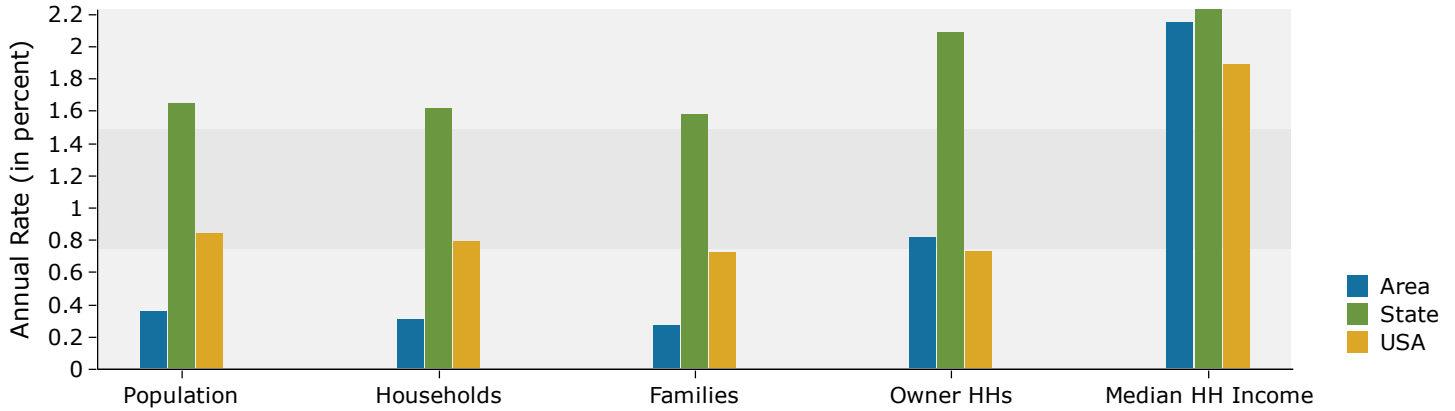
#### 2018 Population by Race



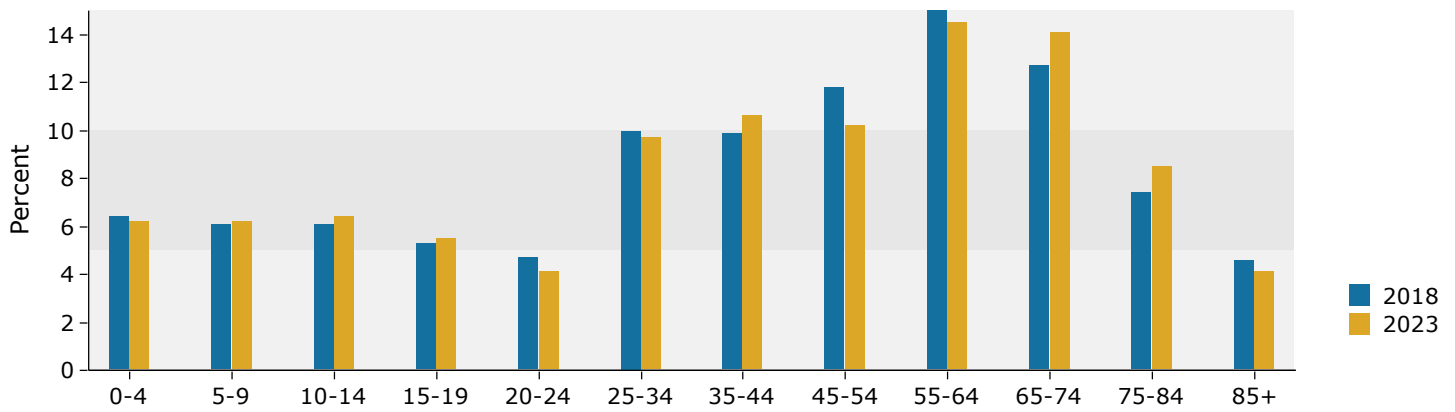
Source: U.S. Census Bureau, Census 2010 Summary File 1. Esri forecasts for 2018 and 2023.

## 5 miles

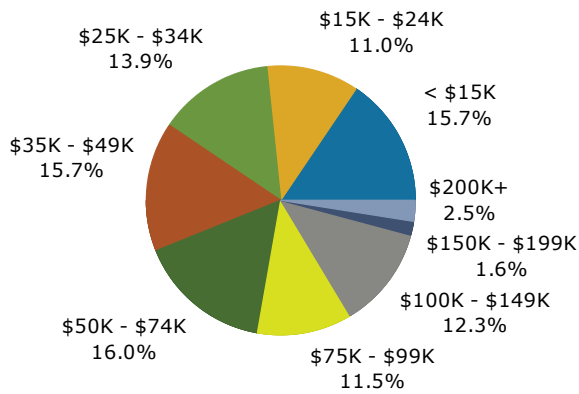
### Trends 2018-2023



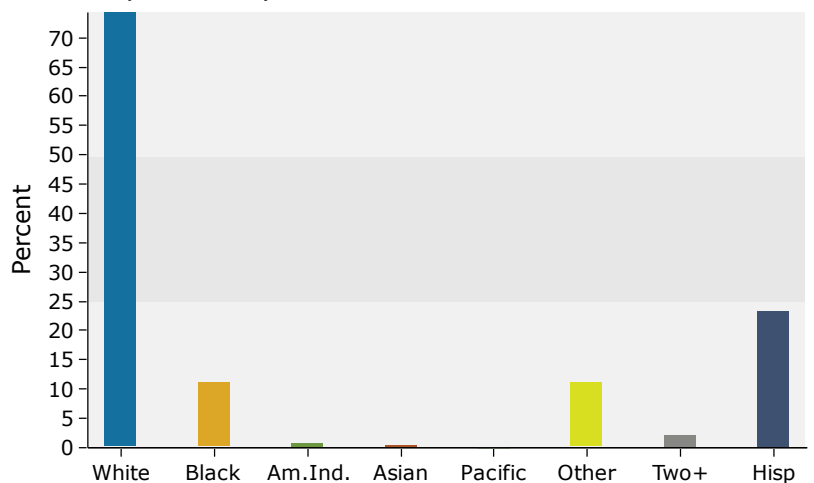
### Population by Age



### 2018 Household Income



### 2018 Population by Race



Source: U.S. Census Bureau, Census 2010 Summary File 1. Esri forecasts for 2018 and 2023.