



Demographic and Income Profile

13435 University Blvd, Sugar Land, Texas, 77479 3
 13435 University Blvd, Sugar Land, Texas, 77479
 Ring: 1 mile radius

Prepared by Esri
 Latitude: 29.58669
 Longitude: -95.64790

Summary	Census 2010	2016	2021
Population	6,527	9,418	12,293
Households	1,932	2,633	3,405
Families	1,777	2,408	3,104
Average Household Size	3.38	3.58	3.61
Owner Occupied Housing Units	1,822	2,464	3,189
Renter Occupied Housing Units	110	169	216
Median Age	36.2	35.9	35.2
Trends: 2016 - 2021 Annual Rate	Area	State	National
Population	5.47%	1.63%	0.84%
Households	5.28%	1.58%	0.79%
Families	5.21%	1.52%	0.72%
Owner HHs	5.29%	1.52%	0.73%
Median Household Income	0.69%	1.86%	1.89%

Households by Income	2016		2021	
	Number	Percent	Number	Percent
<\$15,000	70	2.7%	77	2.3%
\$15,000 - \$24,999	57	2.2%	67	2.0%
\$25,000 - \$34,999	67	2.5%	83	2.4%
\$35,000 - \$49,999	115	4.4%	82	2.4%
\$50,000 - \$74,999	271	10.3%	268	7.9%
\$75,000 - \$99,999	317	12.0%	425	12.5%
\$100,000 - \$149,999	674	25.6%	992	29.1%
\$150,000 - \$199,999	485	18.4%	681	20.0%
\$200,000+	577	21.9%	730	21.4%
Median Household Income	\$125,636		\$130,011	
Average Household Income	\$153,626		\$160,648	
Per Capita Income	\$43,472		\$45,079	

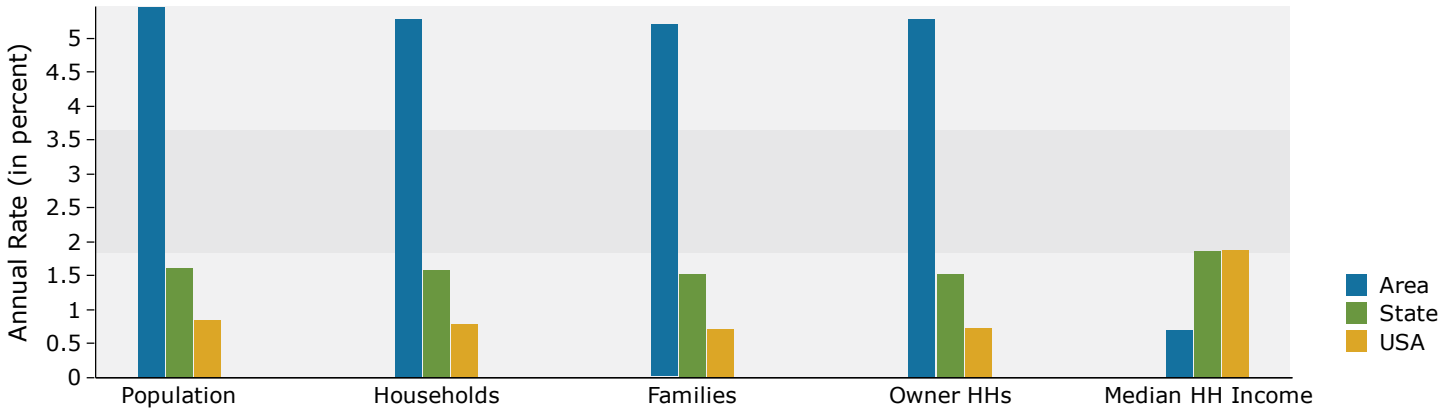
Population by Age	Census 2010		2016		2021	
	Number	Percent	Number	Percent	Number	Percent
0 - 4	594	9.1%	793	8.4%	1,049	8.5%
5 - 9	592	9.1%	917	9.7%	1,200	9.8%
10 - 14	544	8.3%	879	9.3%	1,190	9.7%
15 - 19	387	5.9%	635	6.7%	898	7.3%
20 - 24	235	3.6%	370	3.9%	457	3.7%
25 - 34	757	11.6%	975	10.4%	1,320	10.7%
35 - 44	1,247	19.1%	1,633	17.3%	1,976	16.1%
45 - 54	1,070	16.4%	1,413	15.0%	1,808	14.7%
55 - 64	704	10.8%	1,080	11.5%	1,270	10.3%
65 - 74	242	3.7%	502	5.3%	805	6.5%
75 - 84	124	1.9%	171	1.8%	247	2.0%
85+	31	0.5%	49	0.5%	73	0.6%

Race and Ethnicity	Census 2010		2016		2021	
	Number	Percent	Number	Percent	Number	Percent
White Alone	1,971	30.2%	2,245	23.8%	2,396	19.5%
Black Alone	274	4.2%	355	3.8%	422	3.4%
American Indian Alone	12	0.2%	15	0.2%	17	0.1%
Asian Alone	3,970	60.8%	6,334	67.3%	8,847	72.0%
Pacific Islander Alone	0	0.0%	0	0.0%	0	0.0%
Some Other Race Alone	102	1.6%	152	1.6%	187	1.5%
Two or More Races	198	3.0%	317	3.4%	424	3.4%
Hispanic Origin (Any Race)	399	6.1%	573	6.1%	726	5.9%

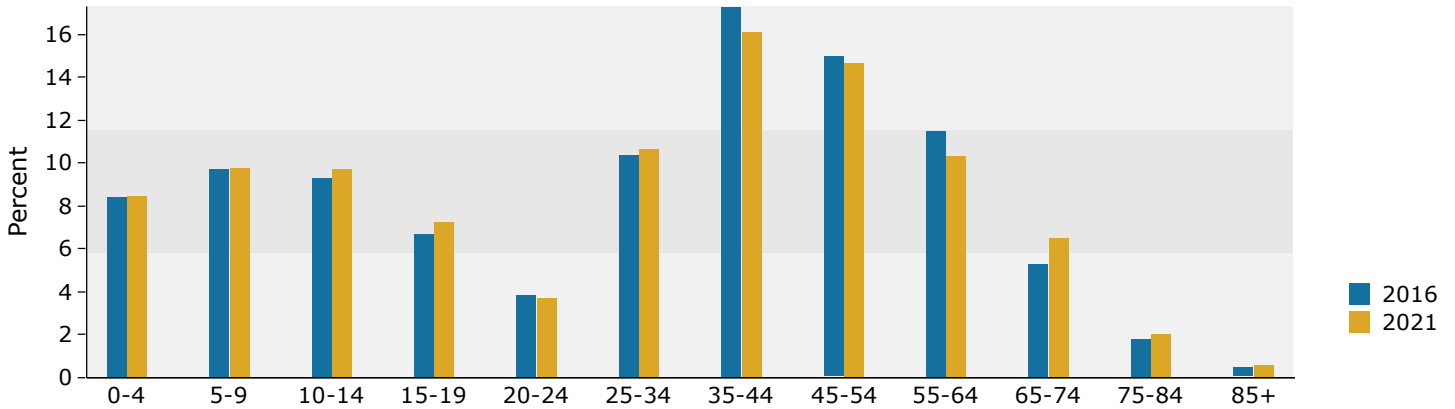
Data Note: Income is expressed in current dollars.

Source: U.S. Census Bureau, Census 2010 Summary File 1. Esri forecasts for 2016 and 2021.

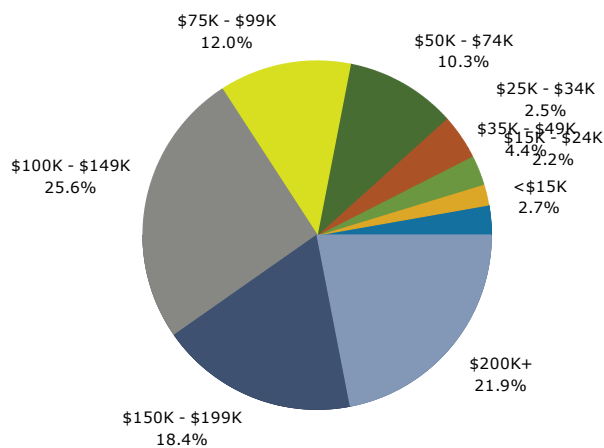
Trends 2016-2021



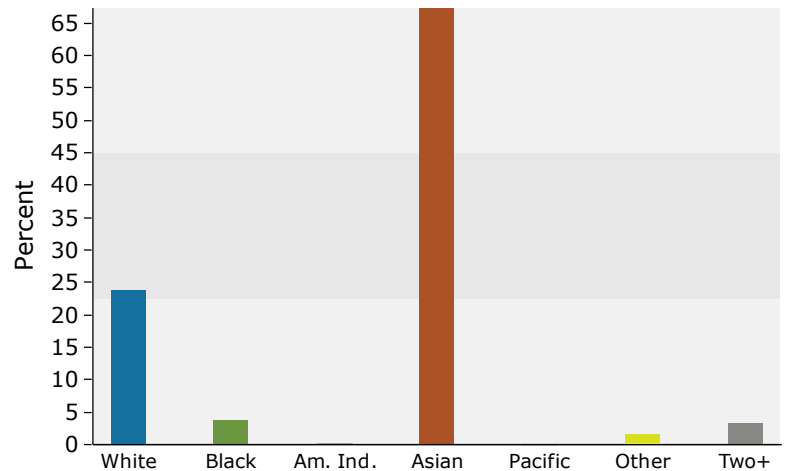
Population by Age



2016 Household Income



2016 Population by Race



2016 Percent Hispanic Origin: 6.1%

Source: U.S. Census Bureau, Census 2010 Summary File 1. Esri forecasts for 2016 and 2021.



Demographic and Income Profile

13435 University Blvd, Sugar Land, Texas, 77479 3
 13435 University Blvd, Sugar Land, Texas, 77479
 Ring: 3 mile radius

Prepared by Esri
 Latitude: 29.58669
 Longitude: -95.64790

Summary	Census 2010	2016	2021
Population	68,563	77,049	88,089
Households	22,294	25,208	28,893
Families	18,556	20,899	23,927
Average Household Size	3.05	3.04	3.03
Owner Occupied Housing Units	17,956	19,664	22,461
Renter Occupied Housing Units	4,338	5,544	6,431
Median Age	39.2	40.0	40.4
Trends: 2016 - 2021 Annual Rate	Area	State	National
Population	2.71%	1.63%	0.84%
Households	2.77%	1.58%	0.79%
Families	2.74%	1.52%	0.72%
Owner HHs	2.70%	1.52%	0.73%
Median Household Income	1.00%	1.86%	1.89%

Households by Income	2016		2021	
	Number	Percent	Number	Percent
<\$15,000	916	3.6%	909	3.1%
\$15,000 - \$24,999	742	2.9%	780	2.7%
\$25,000 - \$34,999	1,073	4.3%	1,207	4.2%
\$35,000 - \$49,999	1,565	6.2%	1,048	3.6%
\$50,000 - \$74,999	2,796	11.1%	2,705	9.4%
\$75,000 - \$99,999	2,877	11.4%	3,486	12.1%
\$100,000 - \$149,999	5,822	23.1%	7,441	25.8%
\$150,000 - \$199,999	3,968	15.7%	4,973	17.2%
\$200,000+	5,449	21.6%	6,344	22.0%
Median Household Income	\$117,341		\$123,314	
Average Household Income	\$150,152		\$159,004	
Per Capita Income	\$49,804		\$52,821	

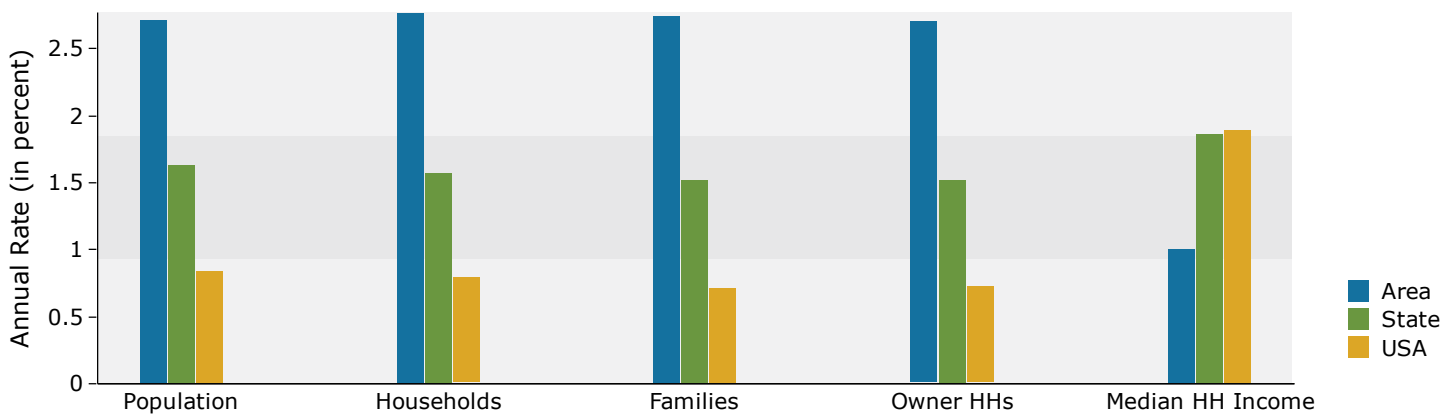
Population by Age	Census 2010		2016		2021	
	Number	Percent	Number	Percent	Number	Percent
0 - 4	3,830	5.6%	4,189	5.4%	4,873	5.5%
5 - 9	5,235	7.6%	5,162	6.7%	5,625	6.4%
10 - 14	6,094	8.9%	6,245	8.1%	6,346	7.2%
15 - 19	5,291	7.7%	5,660	7.3%	5,978	6.8%
20 - 24	3,207	4.7%	3,990	5.2%	3,911	4.4%
25 - 34	6,611	9.6%	8,503	11.0%	10,440	11.9%
35 - 44	10,569	15.4%	10,448	13.6%	12,390	14.1%
45 - 54	12,757	18.6%	12,523	16.3%	12,659	14.4%
55 - 64	9,013	13.1%	11,769	15.3%	13,352	15.2%
65 - 74	3,531	5.2%	5,563	7.2%	8,364	9.5%
75 - 84	1,660	2.4%	2,106	2.7%	3,028	3.4%
85+	763	1.1%	891	1.2%	1,123	1.3%

Race and Ethnicity	Census 2010		2016		2021	
	Number	Percent	Number	Percent	Number	Percent
White Alone	33,795	49.3%	32,992	42.8%	33,151	37.6%
Black Alone	5,430	7.9%	5,865	7.6%	6,386	7.2%
American Indian Alone	142	0.2%	153	0.2%	169	0.2%
Asian Alone	25,746	37.6%	33,784	43.8%	43,379	49.2%
Pacific Islander Alone	27	0.0%	34	0.0%	36	0.0%
Some Other Race Alone	1,311	1.9%	1,588	2.1%	1,804	2.0%
Two or More Races	2,112	3.1%	2,633	3.4%	3,164	3.6%
Hispanic Origin (Any Race)	6,436	9.4%	7,422	9.6%	8,538	9.7%

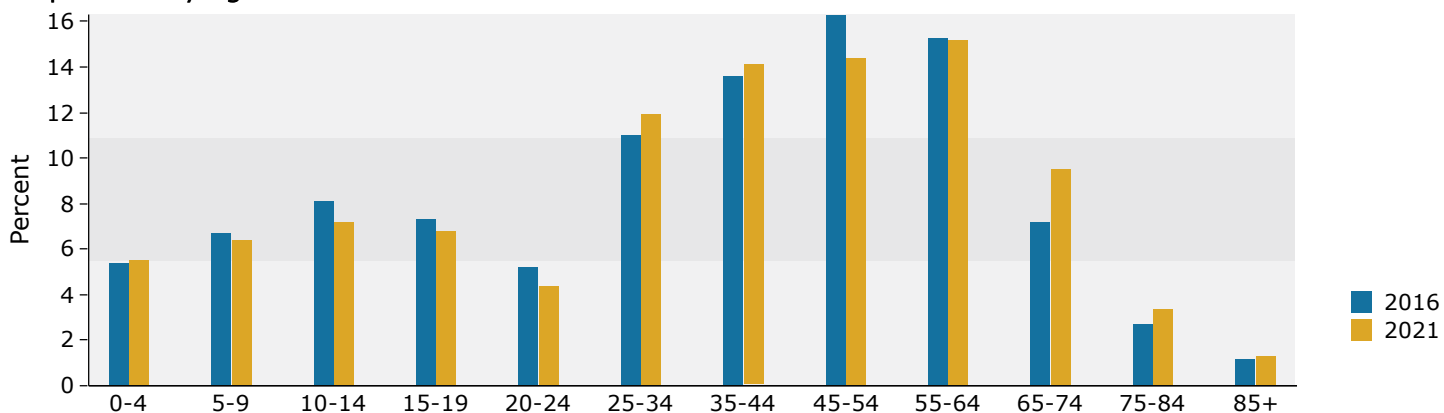
Data Note: Income is expressed in current dollars.

Source: U.S. Census Bureau, Census 2010 Summary File 1. Esri forecasts for 2016 and 2021.

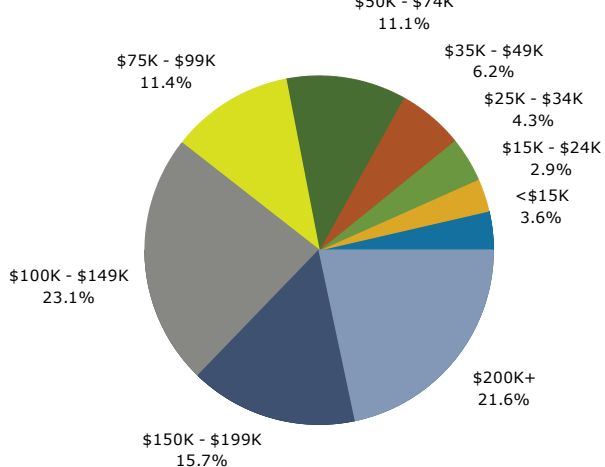
Trends 2016-2021



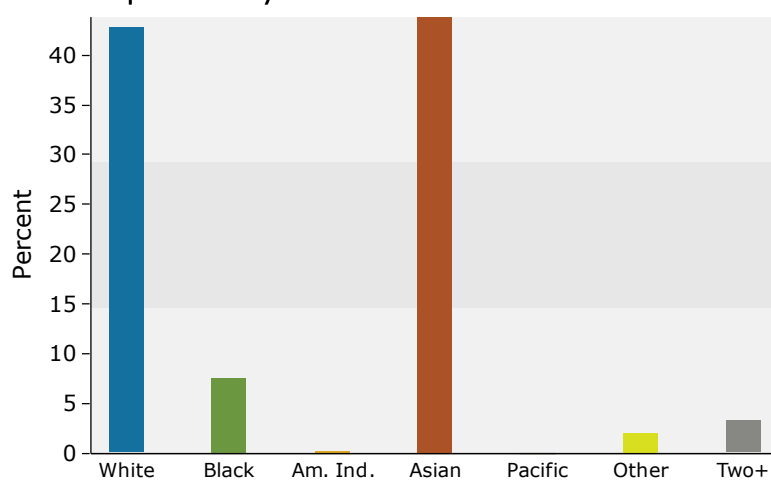
Population by Age



2016 Household Income



2016 Population by Race



2016 Percent Hispanic Origin: 9.6%

Source: U.S. Census Bureau, Census 2010 Summary File 1. Esri forecasts for 2016 and 2021.



Demographic and Income Profile

13435 University Blvd, Sugar Land, Texas, 77479 3
 13435 University Blvd, Sugar Land, Texas, 77479
 Ring: 5 mile radius

Prepared by Esri
 Latitude: 29.58669
 Longitude: -95.64790

Summary	Census 2010	2016	2021
Population	162,378	179,703	203,659
Households	53,226	59,749	68,184
Families	43,559	48,708	55,485
Average Household Size	2.98	2.95	2.94
Owner Occupied Housing Units	41,860	45,460	51,610
Renter Occupied Housing Units	11,366	14,289	16,574
Median Age	37.9	38.7	39.2
Trends: 2016 - 2021 Annual Rate	Area	State	National
Population	2.53%	1.63%	0.84%
Households	2.68%	1.58%	0.79%
Families	2.64%	1.52%	0.72%
Owner HHs	2.57%	1.52%	0.73%
Median Household Income	1.15%	1.86%	1.89%

Households by Income	2016		2021	
	Number	Percent	Number	Percent
<\$15,000	2,409	4.0%	2,464	3.6%
\$15,000 - \$24,999	2,135	3.6%	2,257	3.3%
\$25,000 - \$34,999	2,754	4.6%	3,128	4.6%
\$35,000 - \$49,999	4,541	7.6%	3,133	4.6%
\$50,000 - \$74,999	8,421	14.1%	8,041	11.8%
\$75,000 - \$99,999	7,705	12.9%	9,624	14.1%
\$100,000 - \$149,999	13,823	23.1%	17,698	26.0%
\$150,000 - \$199,999	8,043	13.5%	10,084	14.8%
\$200,000+	9,919	16.6%	11,756	17.2%
Median Household Income	\$104,501		\$110,653	
Average Household Income	\$132,761		\$142,182	
Per Capita Income	\$44,483		\$47,867	

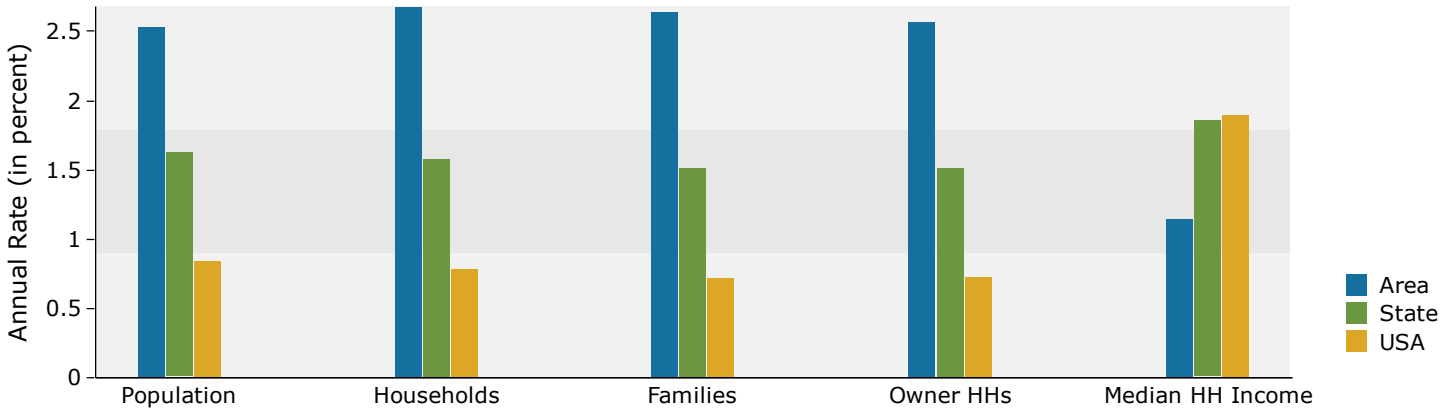
Population by Age	Census 2010		2016		2021	
	Number	Percent	Number	Percent	Number	Percent
0 - 4	9,772	6.0%	10,403	5.8%	11,849	5.8%
5 - 9	12,006	7.4%	12,108	6.7%	13,102	6.4%
10 - 14	13,514	8.3%	13,745	7.6%	14,333	7.0%
15 - 19	12,259	7.5%	12,490	7.0%	13,165	6.5%
20 - 24	8,512	5.2%	10,155	5.7%	9,716	4.8%
25 - 34	18,452	11.4%	22,327	12.4%	26,847	13.2%
35 - 44	24,805	15.3%	24,728	13.8%	29,432	14.5%
45 - 54	28,770	17.7%	27,987	15.6%	28,222	13.9%
55 - 64	20,722	12.8%	26,308	14.6%	29,071	14.3%
65 - 74	8,306	5.1%	12,931	7.2%	18,909	9.3%
75 - 84	3,770	2.3%	4,784	2.7%	6,847	3.4%
85+	1,491	0.9%	1,735	1.0%	2,166	1.1%

Race and Ethnicity	Census 2010		2016		2021	
	Number	Percent	Number	Percent	Number	Percent
White Alone	81,213	50.0%	80,232	44.6%	81,934	40.2%
Black Alone	19,361	11.9%	20,734	11.5%	22,792	11.2%
American Indian Alone	446	0.3%	479	0.3%	535	0.3%
Asian Alone	50,926	31.4%	65,706	36.6%	83,769	41.1%
Pacific Islander Alone	72	0.0%	89	0.0%	95	0.0%
Some Other Race Alone	5,296	3.3%	6,307	3.5%	7,190	3.5%
Two or More Races	5,065	3.1%	6,156	3.4%	7,343	3.6%
Hispanic Origin (Any Race)	21,344	13.1%	24,467	13.6%	28,265	13.9%

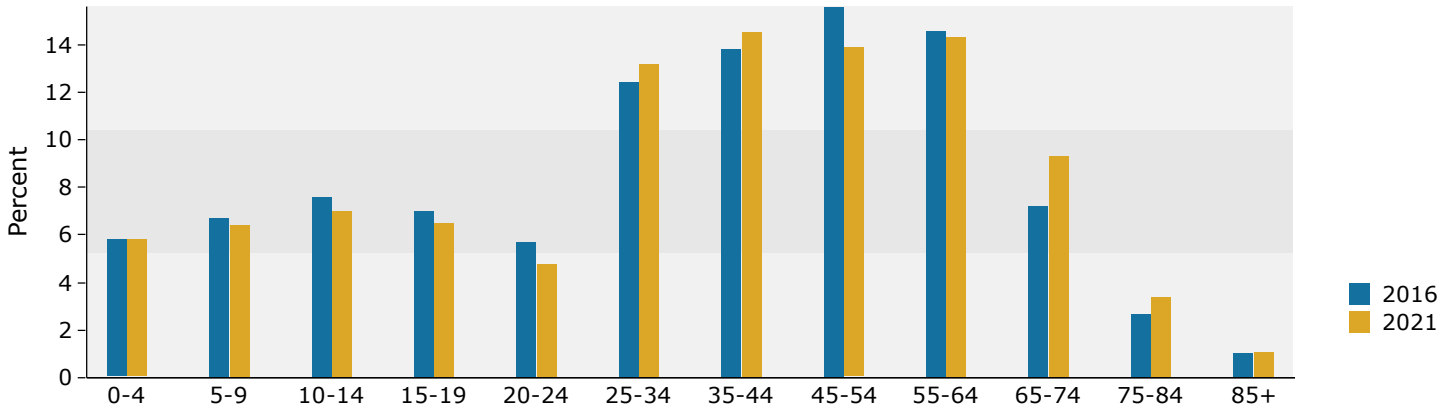
Data Note: Income is expressed in current dollars.

Source: U.S. Census Bureau, Census 2010 Summary File 1. Esri forecasts for 2016 and 2021.

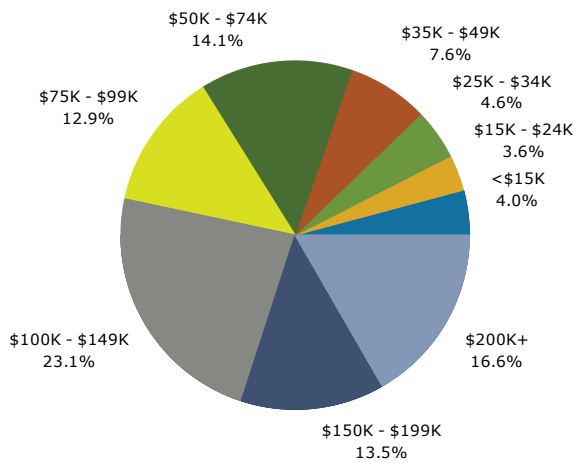
Trends 2016-2021



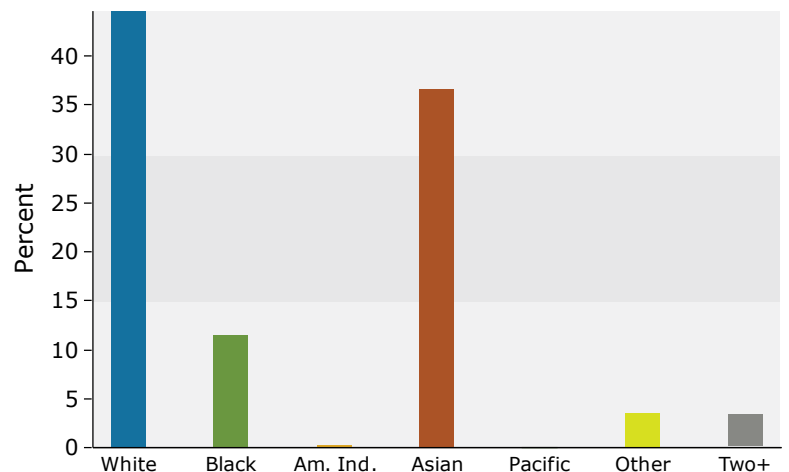
Population by Age



2016 Household Income



2016 Population by Race



2016 Percent Hispanic Origin: 13.6%

Source: U.S. Census Bureau, Census 2010 Summary File 1. Esri forecasts for 2016 and 2021.